



# COVID-19 SAFETY GUIDE FOR ENRICHMENT PROGRAMS AND CAMP STAR

What to expect when attending Summer Enrichment Programs

*(as of June 2022)*



### AGES

**Enrichment:** 6 - 13  
**Camp Star:** 6 - 13

### DAYS

**Monday-Friday (All)**

### DATES

**July 5, 2022 -  
August 12, 2022**

### HOURS

**Enrichment:**  
8:30 AM - 3 PM  
**Camp Star:**  
8:30 AM - 3 PM

### LOCATIONS

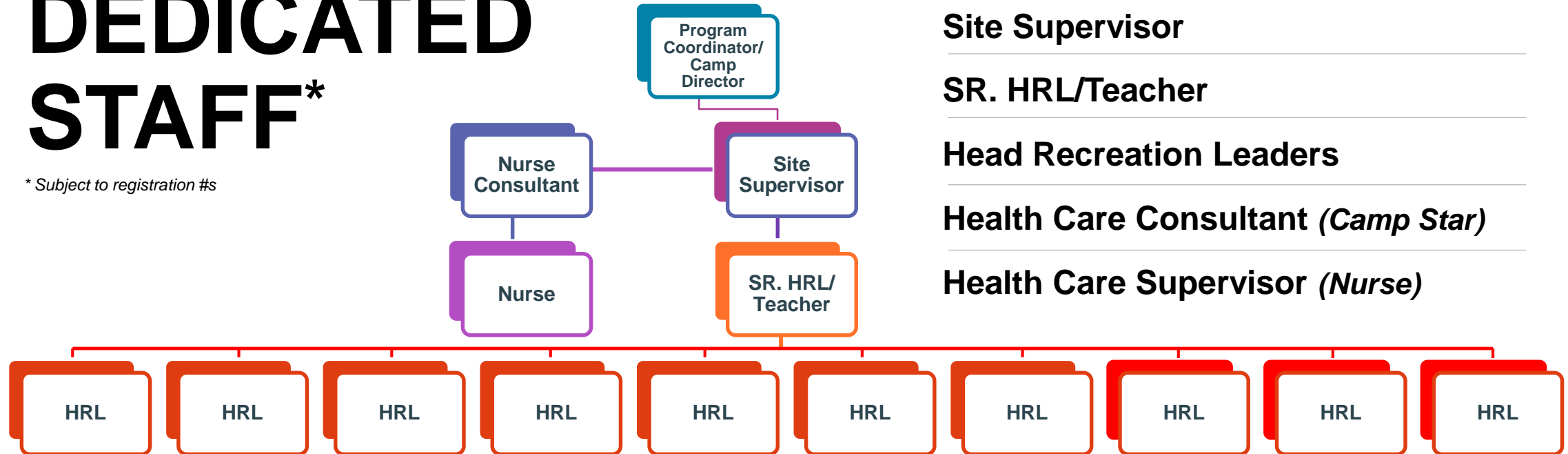
**Enrichment:**  
Central - 21st CCLC  
Van Sickle Academy  
ECOS (*at Forest Park*)  
**Camp Star**  
300 Trafton Road

# CAMP OVERVIEW



# DEDICATED STAFF\*

\* Subject to registration #s



Program Coordinator/Camp Director

Site Supervisor

SR. HRL/Teacher

Head Recreation Leaders

Health Care Consultant (*Camp Star*)

Health Care Supervisor (*Nurse*)





**CALL US**



**It is extremely important that we know  
when your child is not at camp.**

---

**If your camper(s) will be absent, or you need to  
pick up early, please notify us before 12 PM.**

**Enrichment Educational Program Coordinators:**

ECOS - **Esther Alicea**: 413-313-1355

Central 21<sup>st</sup> CCLC- **Channing Calcasola**: 413-355-6229

Van Sickle Academy - **Gabriela Santiago**: 413-426-5639

---

**Camp Star Director:**

**Lean Cisero** - 413-313-5457



# HYGEINE and HANDWASHING

Proper hand hygiene practices and disinfecting frequency for both staff and campers including handwashing and/or hand sanitizer

Personal supplies from staff and campers (i.e., hats, brushes, towels and bags) and drinking containers (i.e., water bottles) must never be shared with others

Signage throughout the camp on signs and symptoms of COVID-19 and the importance of social distancing, mask use, and proper hand hygiene.



# FACE MASKS

Masks/face coverings are optional but encouraged. They **MUST** be provided by the camper/parent.



# CORONAVIRUS

## COVID-19

## PROTECT YOURSELF & OTHERS

### 1. Close Contact/ Exposure to someone outside of the immediate household

- Test 3 days from contact
- If negative, can return to work
- If positive, must re-test 5 days after Contact/ Exposure. If positive again, return to work on day 10. No re-test needed

### 2. Close Contact/ Exposure within the immediate household

- Test 5 days from the household members positive test
- If negative, can return to work
- If positive must remain out for 5 additional days. Can return to work on day 10 from the household members positive test. No re-test needed

### 3. Positive Test

- Re-test after 5 days from positive test.
- If negative, can return to work
- If positive, return to work on day 10. No re-test needed

## BEFORE

Must complete the COVID-19 Waiver during registration prior to program

Monitor for any COVID-19 symptoms in the last 24 hours

Continue to practice proper hygiene – washing hands, wearing a mask, and socially distancing

## DURING

Continuously monitor campers for COVID-19 symptoms

## AFTER

Continue to monitor for any COVID-19 symptoms in the last 24 hours

Continue to practice prior hygiene—washing hands, wearing a mask, and socially distancing

# HEALTH SCREENINGS FOR FAMILIES





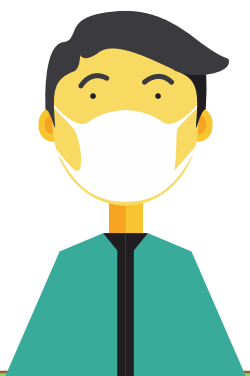
# What can I do if my child becomes sick or is exposed to COVID-19?

Contact the Enrichment Educational Coordinator at 413-313-1355.

And/Or

Contact the Camp Star Director at 413-313-5457.

The Coordinator will then notify the Director of Recreation who will inform the Executive Director of Parks, Buildings and Recreation Management who will contact the local health department.



# DO YOU HAVE ANY QUESTIONS?

CALL US



Enrichment Educational Program Coordinators:

ECOS - Esther Alicea - : 413-313-1355

Central 21<sup>st</sup> CCLC- Channing Calcasola: 413-355-6229

Van Sickle - Gabriela Santiago: 413-426-5639

Camp Star Director :

Lena Cisero 413-313-5457

Or visit, [springfield-ma.gov/park/](http://springfield-ma.gov/park/)

