

Our #1 goal has always been the safety and well-being of our campers and staff, and this summer, we feel that more strongly than ever.

COVID-19 SAFETY GUIDE FOR ENRICHMENT PROGRAMS AND CAMP STAR

What to expect when attending Summer Enrichment Programs
(as of June 2021)



AGES

Enrichment: 6 - 13
Camp Star: 5 - 14

DAYS

Monday-Friday (All)

DATES

**July 6, 2021 -
August 13, 2021**

HOURS

Enrichment:
8:30 AM - 3 PM
Camp Star:
8:30 AM - 3 PM

LOCATION

Enrichment:
Central - 21st CCLC
Renaissance
ECOS (*at Forest Park*)
Camp Star

COHORT (GROUPS)*

Enrichment:
Cohort A: Ages 6 - 7
Cohort B: Ages 8 - 9
Cohort C: Ages 10 - 11
Cohort D: Ages 12 - 13
Camp Star:
Cohort A: Ages 5 - 7
Cohort B: Ages 8 - 9
Cohort C: Ages 10 - 11
Cohort D: Ages 12 - 14

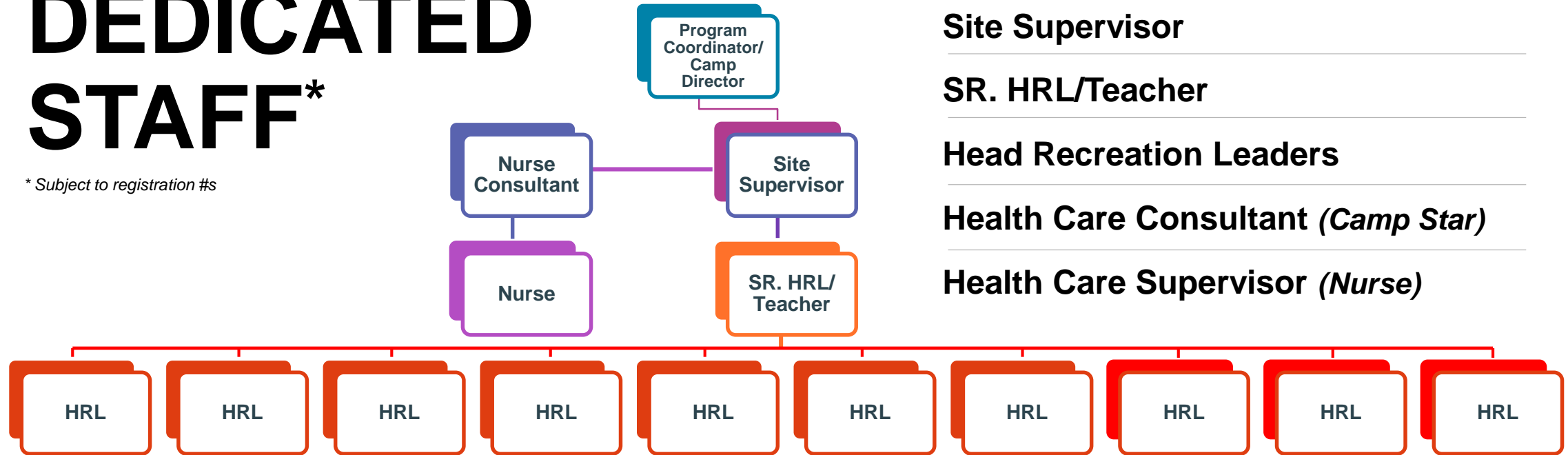
* subject to registration #'s

CAMP OVERVIEW



DEDICATED STAFF*

* Subject to registration #s



Program Coordinator/Camp Director

Site Supervisor

SR. HRL/Teacher

Head Recreation Leaders

Health Care Consultant (*Camp Star*)

Health Care Supervisor (*Nurse*)



CAMP COHORTS

Camper & staff members will be organized into cohorts that will remain together all day, every day. Groups will not exceed 10 campers and 2 counselors per cohort.

If closer interaction is needed this would be extremely brief (i.e., assisting tying a shoe). All activity staff will wear masks at all times while indoors, except when eating, drinking or swimming.

Any staff members that come in contact with multiple cohorts will provide instruction from six feet away to the greatest extent possible.



CORONAVIRUS

COVID-19

**PROTECT
YOURSELF
& OTHERS**

STAFFING and OPERATIONS

Visitors to programs/sites are not allowed

Designated COVID-19 Supervisor/Contact Person responsible for responding to COVID-19 concerns.

Staff will be trained on COVID-19 protocols and procedures.

Staff will provide campers with an orientation at the start of camp to review new COVID-19 protocols, encourage, and educate on reporting of symptoms, and not coming to camp if sick, and how to request a replacement mask if needed.

HYGEINE and HANDWASHING

Proper hand hygiene practices and disinfecting frequency for both staff and campers including handwashing and/or hand sanitizer (*arrival at camp, after coughing and sneezing, before and after meals, after bathroom use, etc.*)

Personal supplies from staff and campers (i.e., hats, brushes, towels and bags) and drinking containers (i.e., water bottles) must never be shared with others

Signage throughout the camp on signs and symptoms of COVID-19 and the importance of social distancing, mask use, and proper hand hygiene.



FACE MASKS

Masks/face coverings are required and should be provided by the camper/parent.

All students will be required to wear a face mask inside during camp, unless they have a medical exemption or are taking a mask break.

Masks will NOT be worn outside.

Students will also be asked to practice Mask Breaks, which includes taking face masks off and putting them back on.



DROP-OFF

A drop off time will be assigned by a cohort.

Parents/Guardians must remain in their vehicles during drop-off and pick-up.

MORNING DROP-OFF

Drop-off time is between 8:30 AM- 9 AM for all campers

Parents/Guardians pull into the site and wait for a counselor. Children are then escorted from their vehicle by a camp counselor. Campers go straight to their cohort to drop-off their belongings and meet their group.

DROP-OFF TIMES

(Cohort A): 8:30 AM – 8:45 AM

(Cohort B): 8:30 AM – 8:45 AM

(Cohort C): 8:45 AM – 9:00 AM

(Cohort D): 8:45 AM – 9:00 AM



PICK-UP

A pick-up time will be assigned by a cohort.

Parents/Guardians must remain in their vehicles during drop-off and pick-up.

AFTERNOON PICK-UP

Pick-up time is between 2:30 PM- 3 PM for all campers

If a camper(s) is not picked up by 3 PM, the parents/guardians will be contacted to arrange a pick-up as soon as possible.
(Charges will apply)

Parents/Guardians should pull into the site and wait for a counselor. Children are then escorted to their vehicle by a camp counselor

PICK-UP TIMES

(Cohort A): 2:30 PM – 2:45 PM

(Cohort B): 2:30 PM – 2:45 PM

(Cohort C): 2:45 PM – 3:00 PM

(Cohort D): 2:45 PM – 3:00 PM





CALL US



**It is extremely important that we know
when your child is not at camp.**

**If your camper(s) will be absent, or you need to
pick up early, please notify us before 12 PM.**

Enrichment Educational Program Coordinators:

ECOS - Esther Alicea: 413-313-1355

Central 21st CCLC- Channing Calcasola: 413-355-6229

Renaissance -Gabriela Santiago: 413-426-5639

Camp Star Director:

Lean Cisero - 413-313-5457



BEFORE

Campers must be tested 72 hours prior to July 6th and provide a negative test result to program coordinators

Must complete the COVID-19 Waiver during online registration prior to program

Monitor for any COVID-19 symptoms in the last 24 hours

Continue to practice proper hygiene – washing hands, wearing a mask, and socially distancing

HEALTH SCREENINGS

DURING

Continuously monitor campers for COVID-19 symptoms

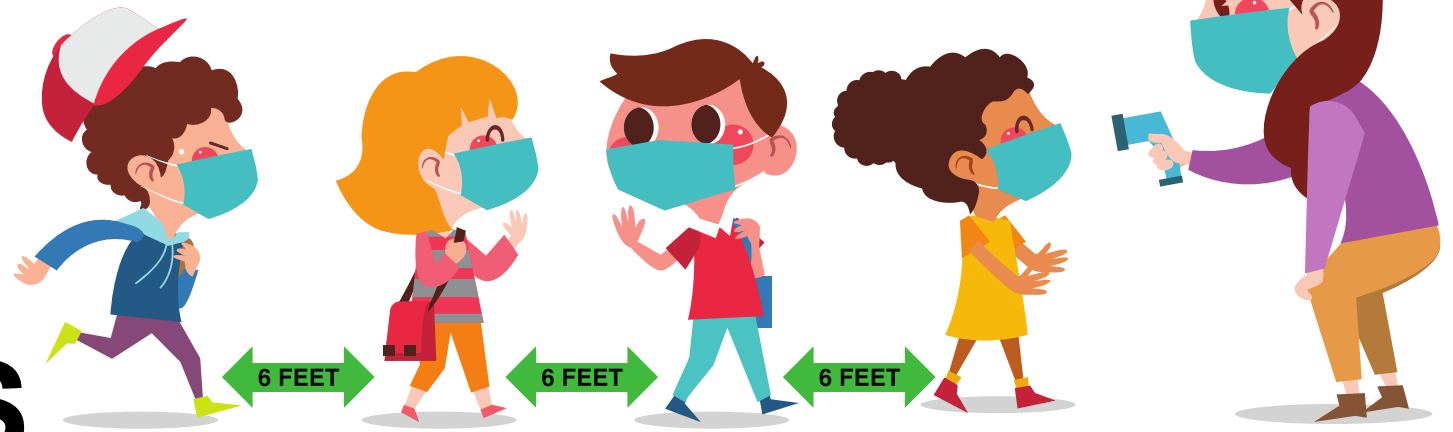
We will be keeping track of potential COVID-19 exposures by continuing contact tracing.

AFTER

Continue to monitor for any COVID-19 symptoms in the last 24 hours

Continue to practice prior hygiene—washing hands, wearing a mask, and socially distancing

NOTE: If a camper or staff member is diagnosed with COVID-19, program officials will engage health authorities to implement contact tracing and a camp notification process. Contact tracing is key to slowing the spread of COVID-19 and helps protect the community



COVID-19 Negative Test Result Information

Campers must be tested 72 hours prior to July 6th and provide a negative test result to program coordinators

Enrichment Educational Program Coordinators:

ECOS - **Esther Alicea**: EAlicea@springfieldcityhall.com

Central 21st CCLC- **Channing Calcasola**: Calcasola@springfieldcityhall.com

Renaissance -**Gabriela Santiago**: GSantiago@springfieldcityhall.com

Camp Star Director:

Lean Cisero - LCisero@springfieldcityhall.com

Symptomatic campers/staff will be isolated immediately, in a designated area/room and will be supervised, at all times by dedicated staff member(s). Others may not enter the isolation space without PPE appropriate for the care setting.

In the event camper/staff tests positive for COVID-19 or is identified as a close contact, they may not return to the camp/program until they have met the requirements for discontinuing isolation or quarantine.

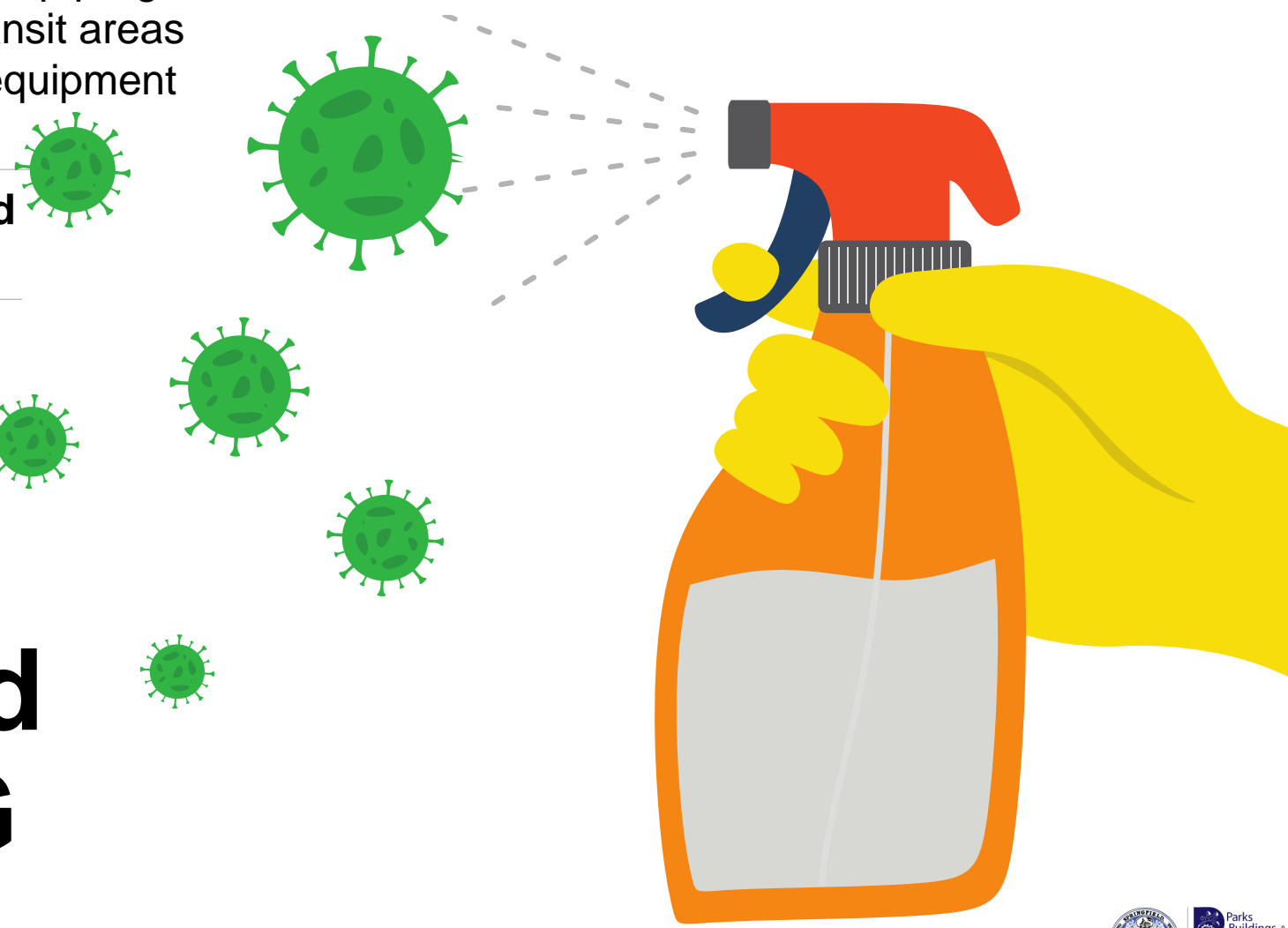
If a symptomatic individual tests negative, they may return to camp after they show improvement in symptoms and have been without fever for at least 24 hours without the use of fever reducing medications.

ISOLATION and QUARANTINE



In accordance with the CDC Guidance, camp/programs, will clean, disinfect, and sanitize heavy transit areas frequently, touched surfaces and shared equipment throughout the day.

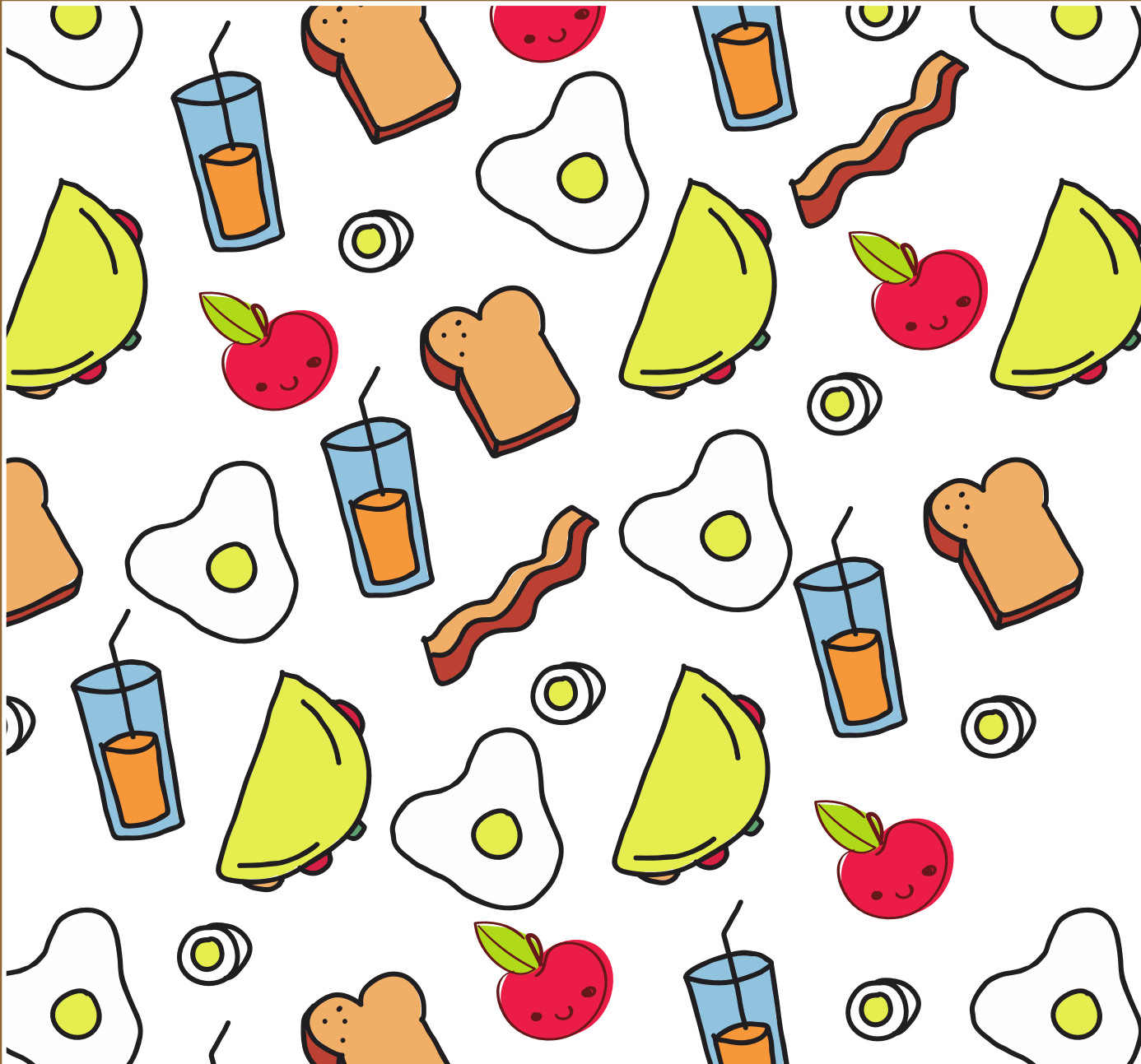
All camp buildings have been upgraded to meet ASHRAE standards



CLEANING and DISINFECTING



**There will be NO
TRANSPORTATION
or FIELD TRIPS
provided this year.**



FOOD SERVICE SAFETY*

Social distancing will be maintained during all meals and cohorts will remain consistent, will not intermingle.

**** All food from home MUST BE kept on the child/children throughout the camp day.***

DURING MEALS

Meals will be distributed to each camper one at a time while maintaining social distancing in their cohorts.



CAMPERS WILL FOLLOW THESE STEPS DURING MEALS:

- Use hand sanitizer
- Will receive their meal, paper towel, and sanitizing wipes
- Return to cohort areas
- Use a sanitizing wipe on their hands
- Wipe down their area with the sanitizing wipe
- Place a paper towel on their area
- Remove their mask and place the mask on the paper towel
- Eat and **not** share food
- Put their mask back on
- Dispose of their trash one at a time

ACTIVITY LIMITATIONS

All activities will be outside
when possible.



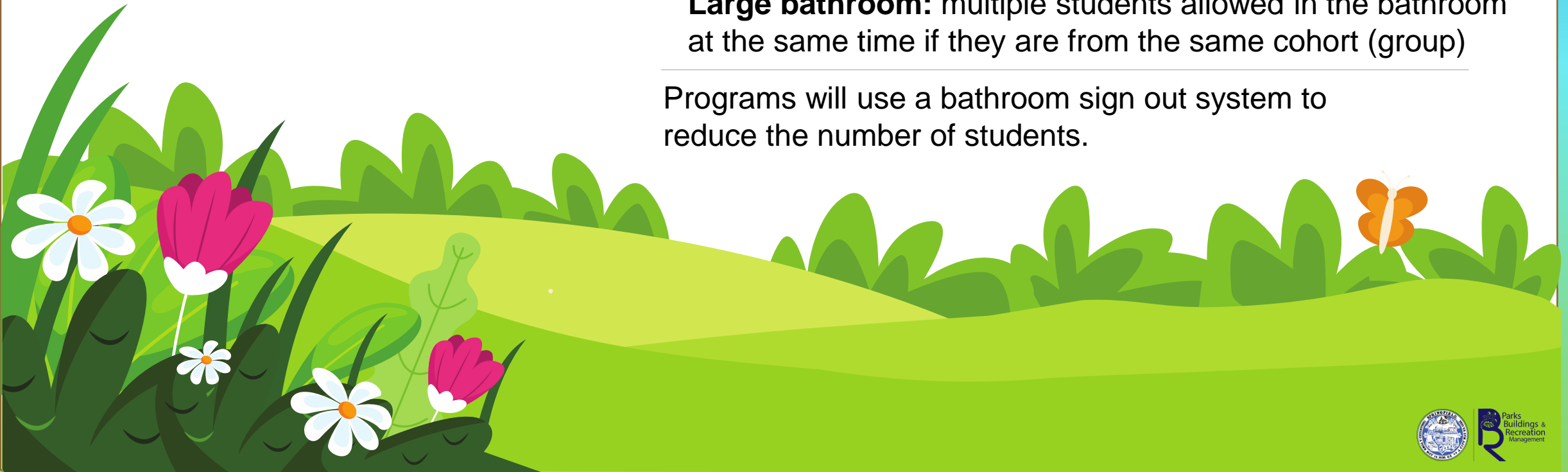
Students will not be allowed to use the
bathroom during transition times.

Bathrooms will be assigned by staff and each program will
have a plan for what cohorts (groups) have access to a
particular bathroom at a particular time.

Small bathrooms: one student allowed in the bathroom

Large bathroom: multiple students allowed in the bathroom
at the same time if they are from the same cohort (group)

Programs will use a bathroom sign out system to
reduce the number of students.



What can I do if my child becomes sick or is exposed to COVID-19?

Contact the Enrichment Educational Coordinator at 413-313-1355.



Contact the Camp Star Director at 413-313-5457.

The Coordinator will then notify the Director of Recreation who will inform the Executive Director of Parks, Buildings and Recreation Management who will contact the local health department.



DO YOU HAVE ANY QUESTIONS?

CALL US



Enrichment Educational Program Coordinators:

ECOS - Esther Alicea - : 413-313-1355

Central 21st CCLC- Channing Calcasola: 413-355-6229

Renaissance - **Gabriela Santiago**: 413-426-5639

Camp Star Director :

Lena Cisero 413-313-5457

Or visit, springfield-ma.gov/park/

