



**City of Springfield
Department of Public Works
and the Mayor's Office**

**Pedestrian / Roadway
Improvement Analysis
State Street**

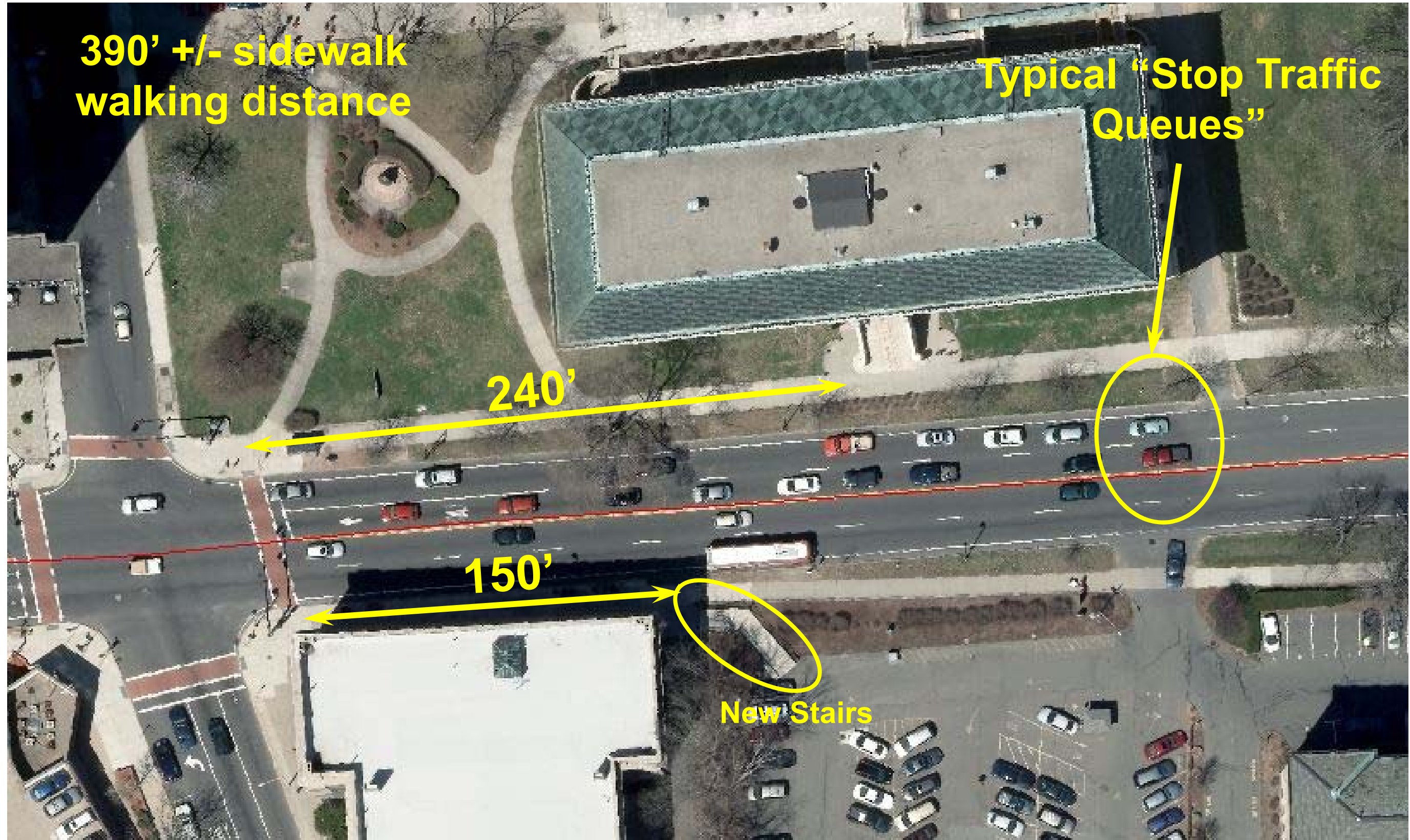


Previous Analyses

1. From the Early 1970's to the early 1990's there was a defined crosswalk from the Library to the Parking Lot across the street.
2. Crossing Removed due to numerous accidents / pedestrian issues (do not have date of when it was removed).
3. State Street was redesigned by the City / MassDOT in the mid-2000's. Traffic analyses determined that a crossing could not be installed at the Library.
4. Full & upgraded pedestrian crossing at State St. and Chestnut / Maple St. was installed.
5. Pedestrians "deterred" from crossing State St. in front of Library.
6. All recent traffic studies confirmed crossing at Library is not safe due to "stop traffic queues". Most recent 2018.
7. Google streetview is from 2007—pre State St. construction.



Existing Condition Layout

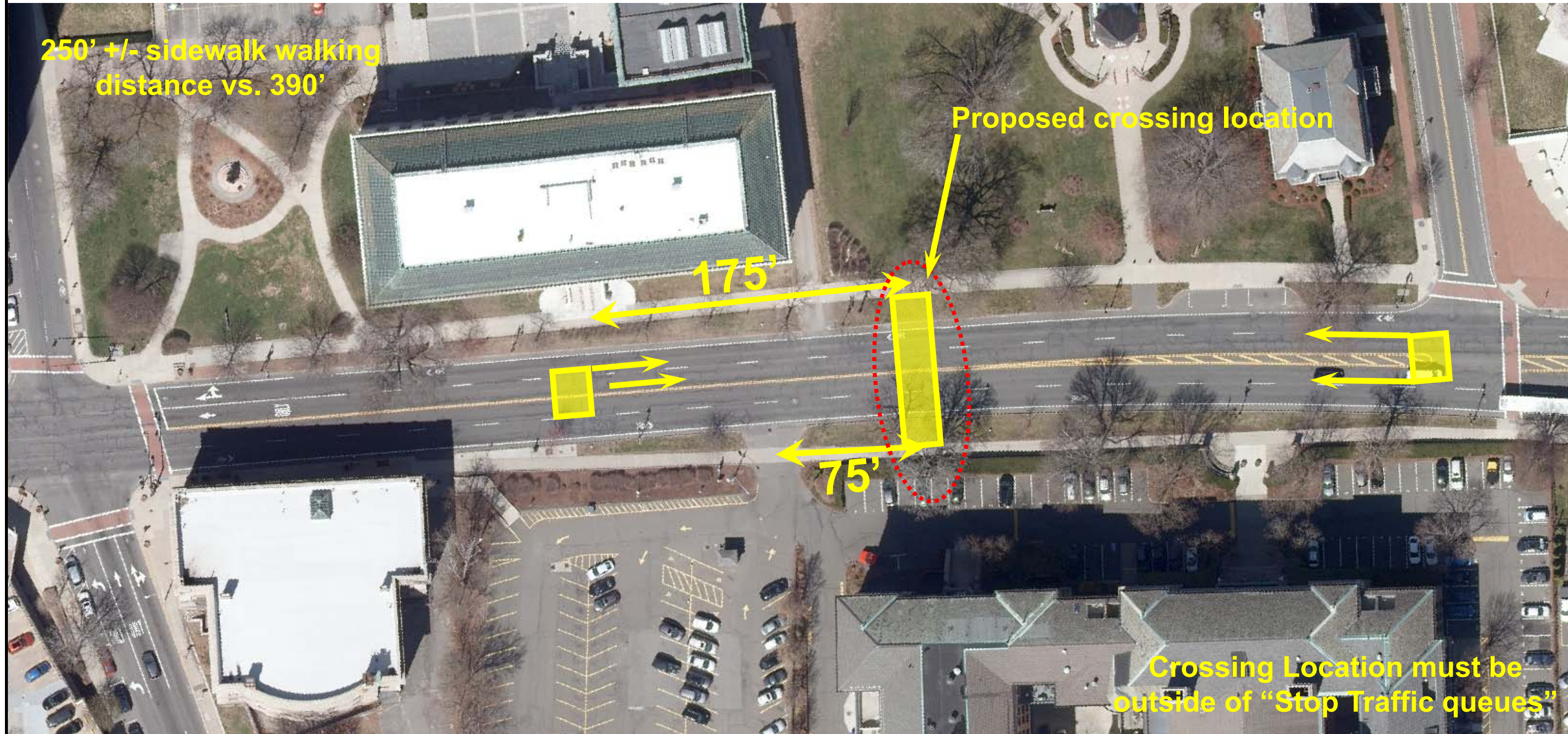


Current Analyses

1. Started in June 2021
2. Selected Traffic Consultant from DPW On-Call List.
3. Obtained MassDOT approval to utilize Chapter 90 funds for the Study
4. Review of all recent traffic studies for the corridor. Most recent is Roadway Safety Audit (RSA) / Traffic Study for Casino Development.
5. As part of Casino there were signal timing changes and addition / modifications of bike lanes along the State St. corridor
6. Pedestrian Crossing counts were taken / observed in the field during peak periods in November 2021.
7. Determination has been made as to where a crossing can be installed.
8. Remaining analysis is to determine proper roadway narrowing layout.
9. Proposed layout is for a raised crosswalk, pavement narrowing and installation of RRFB / HAWK system.
10. DPW will propose in the spring to install cones, barrels , barricades, etc. to see the impact to traffic.
11. Ultimate solution would need engineering design for roadway alteration for grading, merging, visibility, sight distances, ADA compliance, etc.



Proposed Improvements



Crossing Location to include:

Pavement Narrowing to one lane – narrow either from the center or from the curb

Narrowing will be from Elliot St to midpoint of Library

Most likely a raised crosswalk with RRFB or HAWK system

DPW will install cones, barrels, barricades to mimic layout in the spring

Proposed Improvements



HIGHWAY GUARD TYPE SS
NONE

TRAFFIC SIGNAL CONDUIT
SEE BELOW

WATER SUPPLY ALTERATIONS
NONE
CONT. ON SHEET 33

DRAINAGE DETAILS
SEE BELOW

CROSS SECTIONS
NONE

ALIGNMENT
SEE SHEET NO. 79

SPRINGFIELD STATE STREET				
STATE	FED. AID PROJ. NO.	FISCAL YEAR	SHEET NO.	TOTAL SHEETS
MASS.	HP-2015(884)	2008	32	254
PROJECT FILE NO. 804447				

GENERAL PLAN

FOR PROFILE SEE SHEET NO. 64 & 65

J:\DWG\P2012\1457\T12\Civil\Plan\09490GEN.dwg