

MGM Springfield Grand Opening Traffic Management Plan

August 24, 2018 – 11:00 AM



City Sign-offs / Approvals



Off-Site Improvements – Complying with FEIR, City Reviews, Section 61 Findings, MassDOT Reviews, HCA, etc.

- **Work is Substantially Complete and available for Full Beneficial Use. City Draft Approval Letters with Punch List items have been provided to MGM, MassDOT and MGC. City see no major issues preventing facility operation at this time.**

On-Site Improvements – Complying with City Reviews, HCA, etc.

- **Work is Close to being Substantially Complete and will available for Full Beneficial Use. City Draft Approval Letters with Punch List items will be provided to MGM, MassDOT and MGC within the next 3 weeks. City see no major issues preventing facility operation at this time.**

MGM Springfield Grand Opening Traffic Management Plan

MassDOT Traffic Management Meetings

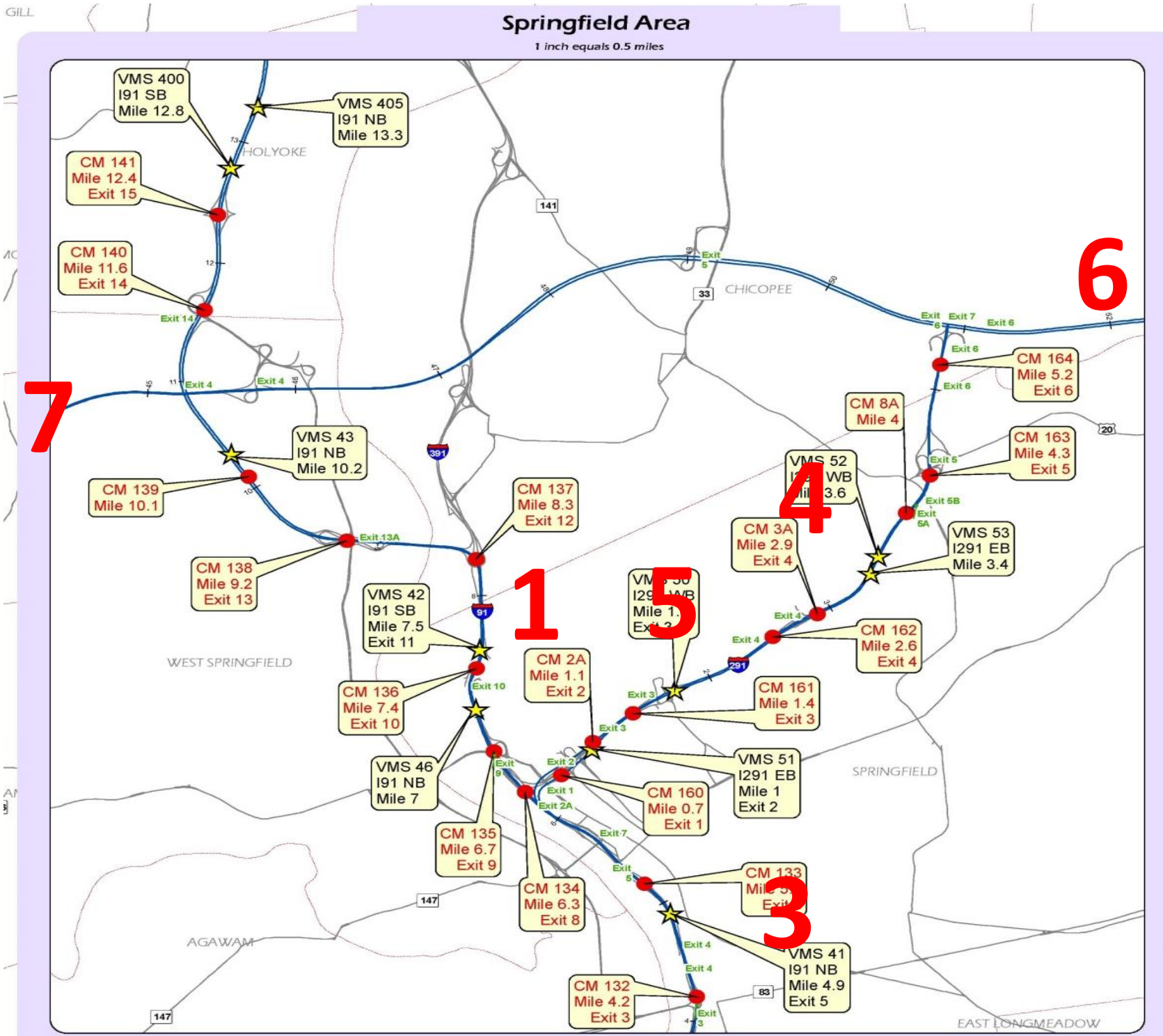


Beginning in February 2018 and every Tuesday thereafter, the following entities met to discuss Grand Opening Traffic and post-opening daily traffic issues :

- **MGM**
- **Department of Public Works**
- **Springfield Police Dept.**
- **Springfield Fire Dept.**
- **AMR**
- **Springfield Parking Authority**
- **Pioneer Valley Transit Authority**
- **Town of Longmeadow**
- **Town of West Springfield**
- **Town of Agawam**
- **Mass State Police**
- **MassDOT**
- **Mass Gaming Commission**

MGM Springfield Grand Opening Traffic Management Plan

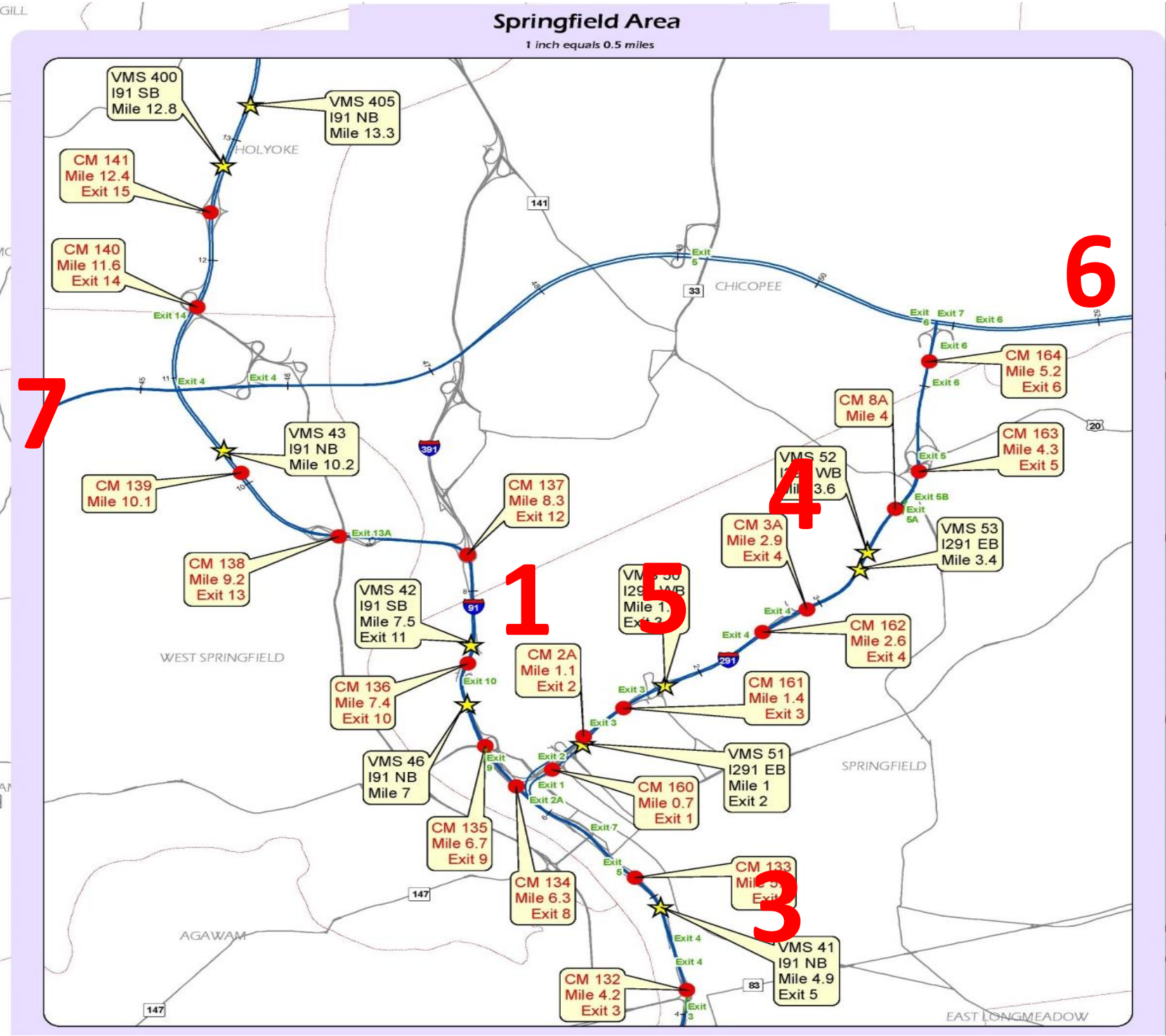
MassDOT Overhead Sign Locations



1. I-91 South – VMS 42 – Birnie Ave. Area – MM 7.5
2. I-91 North – VMS 40 – Longmeadow – MM 2.4
3. I-91 North – VMS 41 – Springfield MM 4.9
4. I-291 West – VMS 52 – Springfield – MM 3.6
5. I-291 West – VMS 50 – Springfield – MM 1.8
6. I-90 West – Ludlow – near West St. – Before Springfield Exit
7. I-90 Eastbound – Westfield – near Montgomery Road – before Westfield Exit

MGM Springfield Grand Opening Traffic Management Plan

MassDOT Overhead Sign Locations



Sign #	MassDOT 7 Days in Advance 6AM Aug 17 thru 4PM August 23	MassDOT 4 PM August 23 thru 6 AM August 24	MassDOT 6 AM August 24 thru 4 PM August 24	MassDOT 4 PM AUGUST 24 thru 4 PM AUGUST 26
1 VMS42 I91SB Ex 11 MM7.5	MGM SPRINGFIELD OPENS AUG 24 EXPECT DELAYS	MGM SPRINGFIELD OPENS AUG 24 EXPECT DELAYS TUNE TO 102.5 FM FOR TRAFFIC INFO	MGM SPRINGFIELD USE EXITS 7 & 4 TUNE TO 102.5 FM FOR TRAFFIC INFO	MGM SPRINGFIELD USE EXITS 7 & 4 TUNE TO 102.5 FM FOR TRAFFIC INFO
2 VMS40 I91NB MM2.4	MGM SPRINGFIELD OPENS AUG 24 EXPECT DELAYS	MGM SPRINGFIELD OPENS AUG 24 EXPECT DELAYS TUNE TO 102.5 FM FOR TRAFFIC INFO	EXIT 6 CLOSED DETOUR USE EXIT 5 TUNE TO 102.5 FM FOR TRAFFIC INFO	MGM SPRINGFIELD USE EXITS 5 & 6 TUNE TO 102.5 FM FOR TRAFFIC INFO
3 VMS41 I91NB MM4.9	MGM SPRINGFIELD OPENS AUG 24 EXPECT DELAYS	MGM SPRINGFIELD OPENS AUG 24 EXPECT DELAYS TUNE TO 102.5 FM FOR TRAFFIC INFO	EXIT 6 CLOSED TUNE TO 102.5 FM FOR TRAFFIC INFO	MGM SPRINGFIELD USE EXIT 6 TUNE TO 102.5 FM FOR TRAFFIC INFO
4 VMS52 I291W MM3.6	MGM SPRINGFIELD OPENS AUG 24 EXPECT DELAYS	MGM SPRINGFIELD OPENS AUG 24 EXPECT DELAYS TUNE TO 102.5 FM FOR TRAFFIC INFO	MGM SPRINGFIELD USE EXIT 1A TO I-91S EXIT 4 TUNE TO 102.5 FM FOR TRAFFIC INFO	MGM SPRINGFIELD USE EXIT 1A TO I-91S EXIT 4 TUNE TO 102.5 FM FOR TRAFFIC INFO
5 VMS50 I291W MM1.8	MGM SPRINGFIELD OPENS AUG 24 EXPECT DELAYS	MGM SPRINGFIELD OPENS AUG 24 EXPECT DELAYS TUNE TO 102.5 FM FOR TRAFFIC INFO	MGM SPRINGFIELD USE EXIT 1A TO I-91S EXIT 4 TUNE TO 102.5 FM FOR TRAFFIC INFO	MGM SPRINGFIELD USE EXIT 1A TO I-91S EXIT 4 TUNE TO 102.5 FM FOR TRAFFIC INFO
6 I90WB Ludlow	MGM SPRINGFIELD OPENS AUG 24 EXPECT DELAYS	MGM SPRINGFIELD OPENS AUG 24 EXPECT DELAYS TUNE TO 102.5 FM FOR TRAFFIC INFO	MGM SPRINGFIELD USE EXIT 6 I-291W TO I-91S TUNE TO 102.5 FM FOR TRAFFIC INFO	MGM SPRINGFIELD USE EXIT 6 I-291W TO I-91S TUNE TO 102.5 FM FOR TRAFFIC INFO
7 I90EB W'field	MGM SPRINGFIELD OPENS AUG 24 EXPECT DELAYS	MGM SPRINGFIELD OPENS AUG 24 EXPECT DELAYS TUNE TO 102.5 FM FOR TRAFFIC INFO	MGM SPRINGFIELD USE EXIT 4 TO I-91 SOUTH TUNE TO 102.5 FM FOR TRAFFIC INFO	MGM SPRINGFIELD USE EXIT 4 TO I-91 SOUTH TUNE TO 102.5 FM FOR TRAFFIC INFO

MGM Springfield Grand Opening Traffic Management Plan

VMS Locations



MGM Springfield Grand Opening Traffic Management Plan

Proposed “Road Closure” Locations



ROAD CLOSURES IN DOWNTOWN WILL BE ACCOMPLISHED BY A COMBINATION OF CONES, BARRELS, BARRICADES, POLICE VEHICLES & DPW VEHICLES

ROAD CLOSURES WILL BEGIN AT 4 AM FRIDAY AND WILL END AT APPROXIMATELY 2 PM FRIDAY (8/24)

1. Main Street from Court Street / Bruce Landon Way to Union Street
2. State Street from MGM Way to Dwight Street
3. Union Street from Main Street to East Columbus Ave. – business access will be allowed.
4. Stockbridge Street from Main Street to Willow Street
5. Willow Street from State Street to Union Street – Access to Apartments and CHC via Park St. will be maintained
6. Park St. will be closed at Main St. access to Park St. via Willow St. will be allowed.
7. Cross Street – from Main St. to Willow St. – **PLEASE NOTE THAT CROSS ST. WILL BE CLOSED FROM 8 AM FRIDAY (8/24) TO 10 PM SUNDAY (8/26)**



MGM Springfield Grand Opening Traffic Management Plan

Proposed “No Parking” Locations



***NO PARKING FROM 4 AM FRIDAY (8/24) TO
10 PM SUNDAY (8/26):***

1. West Side Main Street – between Boland Way and Court St.
2. North Side Court Street – between Main St. and City Hall Place
3. South Side State Street - between East Columbus Ave. and Dwight St.
4. Stockbridge St. - Both Sides between Main St. and Willow St.
5. Cross St. – Both Sides from Main St. to Willow St.
6. Willow St. – Both Sides – State St. to Union St.
7. Main St. – Both Sides from State St. to Williams St.
8. East Columbus Ave. – East Side entire length

***NO PARKING FROM 4 AM FRIDAY (8/24) TO
10 AM SATURDAY (8/25):***

9. Wilcox St. – Both Sides – East Columbus Ave. to Main St.
10. Williams St. – Both Sides – East Columbus Ave. to Main St.

MGM Springfield Grand Opening Traffic Management Plan

Proposed Shuttle Route



MGM Springfield Grand Opening Traffic Management Plan

Underpass Closure & Circulation





Garage Queueing

- East Columbus @ MGM Way (Bliss St.) Closed until Garage Open
- Signage at MGM Way (Bliss St.) by MGM
- Queueing Length East Columbus – 3800'/- Double Stack – 350 cars
- Controlling Side Street Access / Cutting
- If you load 1 car every 3 seconds into the garage it will take 3 hours to reach capacity



MGM Springfield Grand Opening Traffic Management Plan

Ramp Opening / Closure



- Queueing Length East Columbus – 3800’/- Double Stack – 350 cars
- Need advance notice on highway for Exit Closures – Only Union St. exit closed
- Northbound – Next Exit is 291
- Southbound – Regardless of which exit they will get into the circulation loop



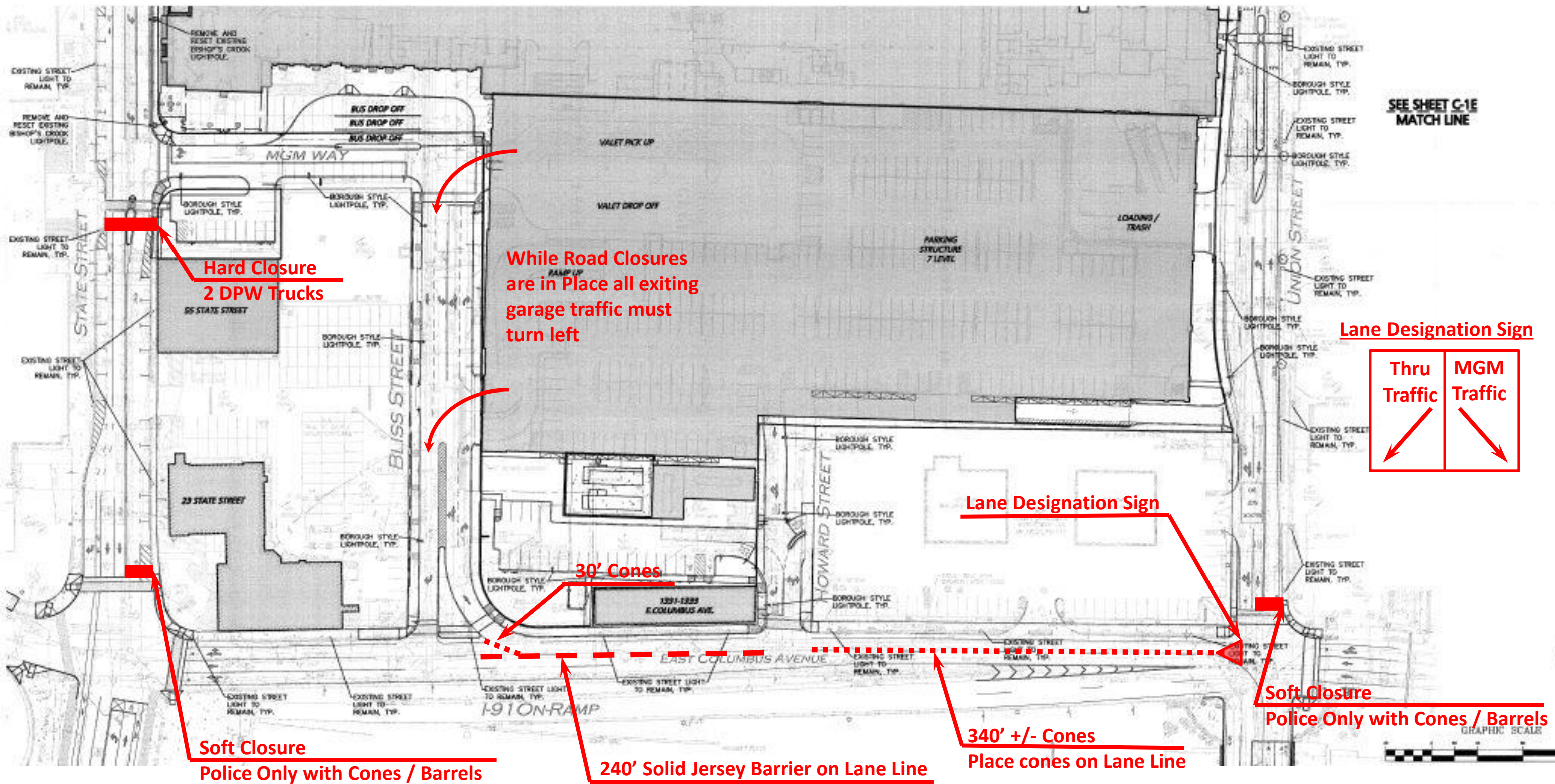
MGM Grand Opening Traffic Management Plan

MGM "LOOP" Map



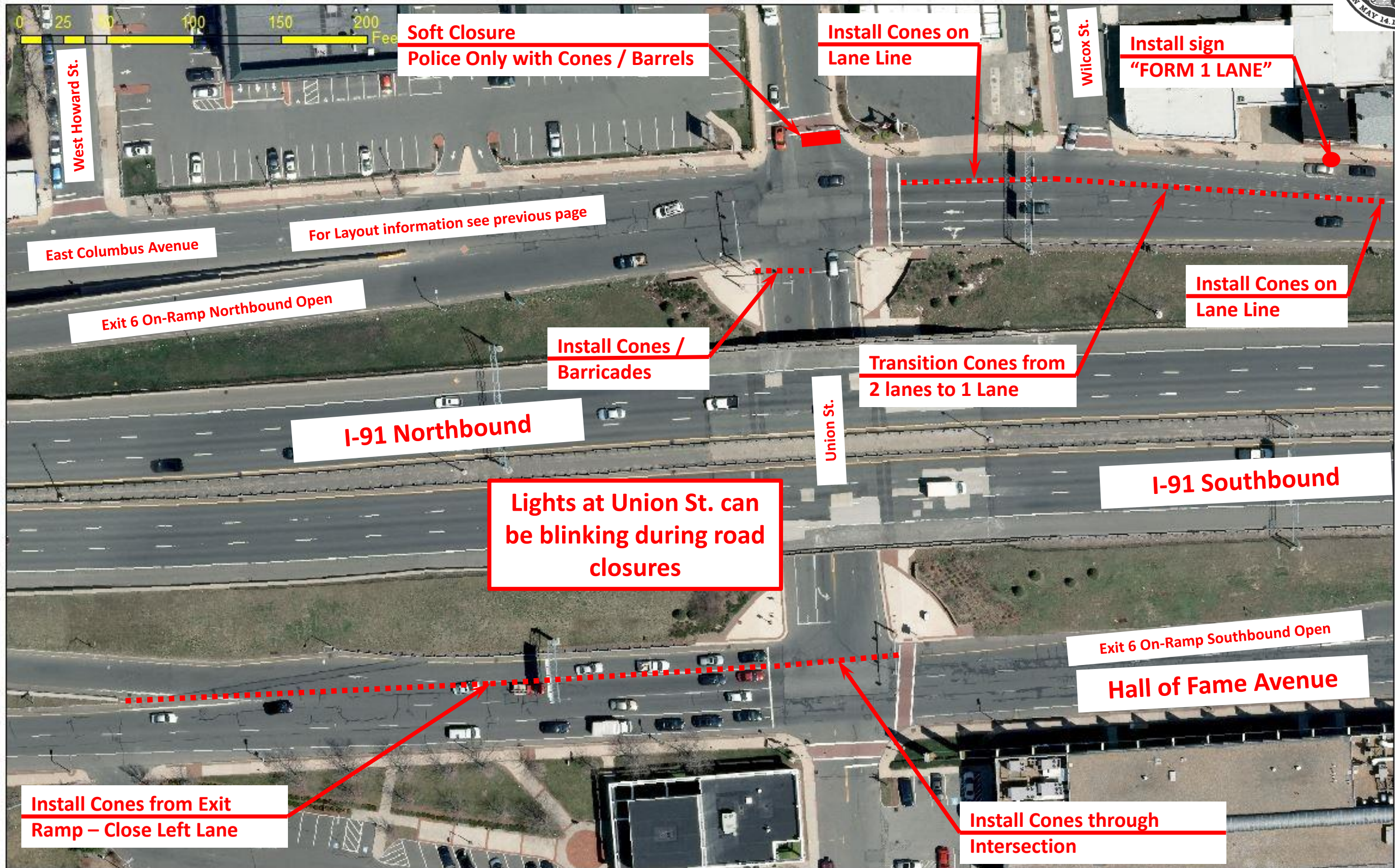
MGM Springfield Grand Opening Traffic Management Plan

Traffic Materials Layout Plan



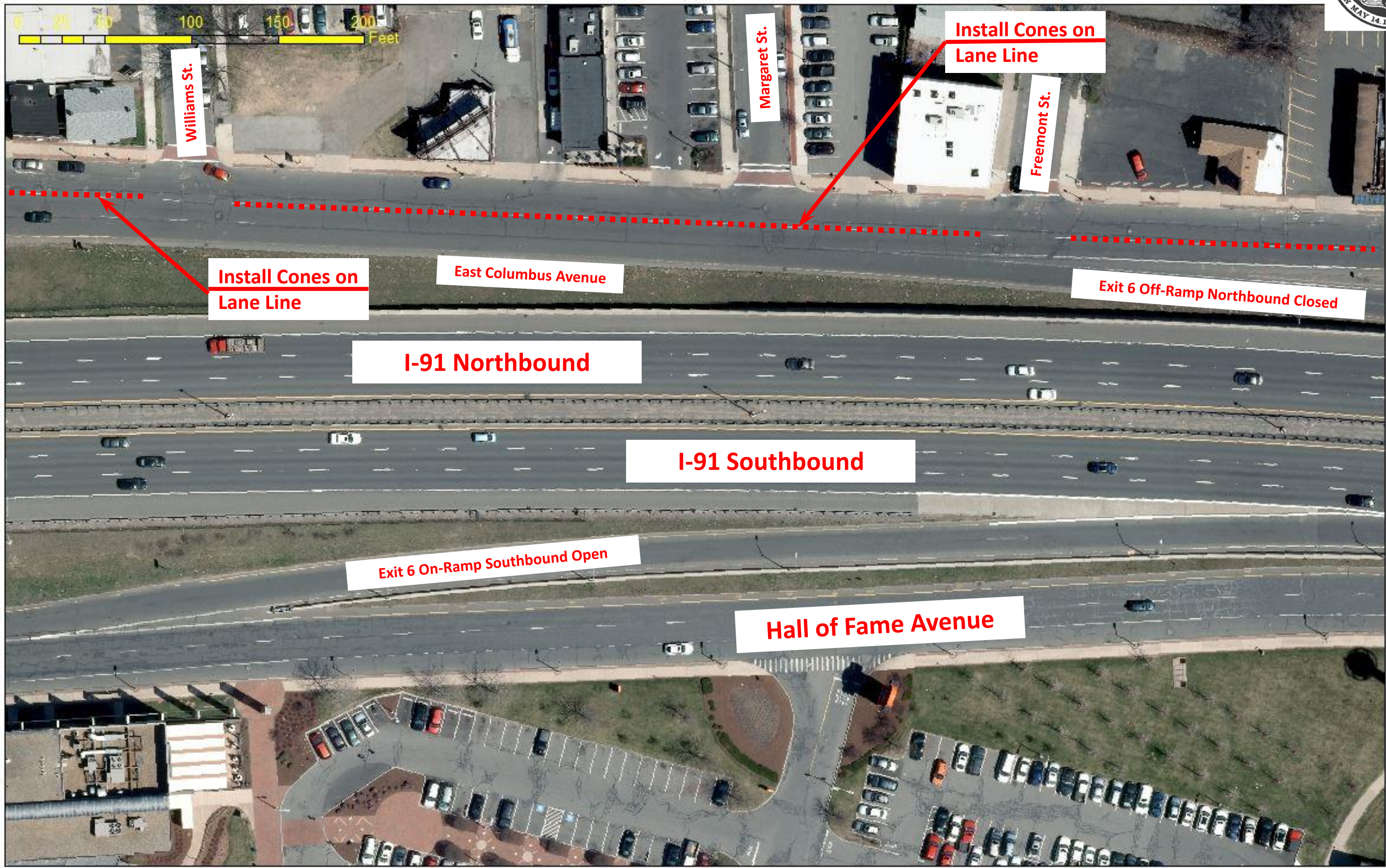
MGM Springfield Grand Opening Traffic Management Plan

Traffic Materials Layout Plan



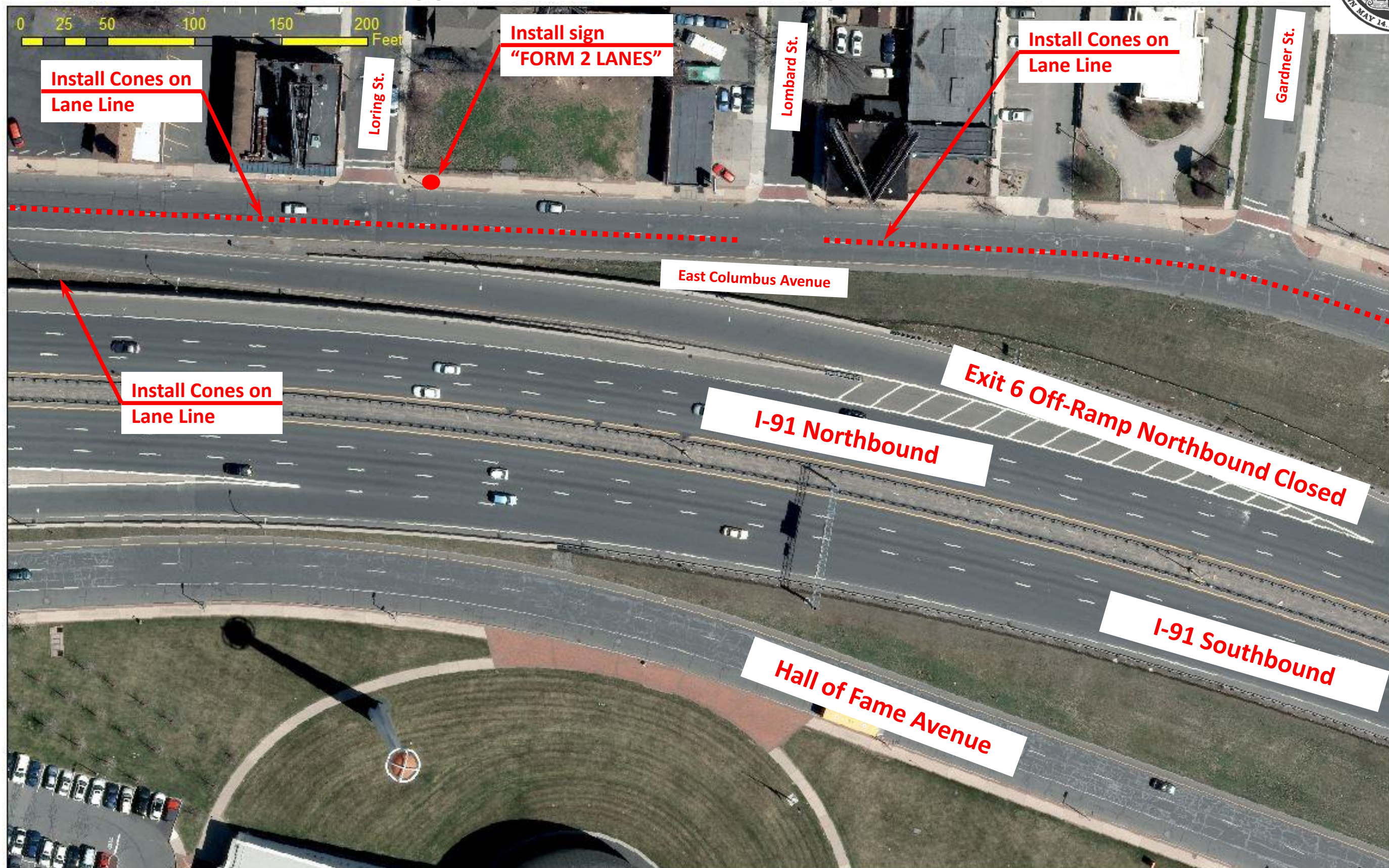
MGM Springfield Grand Opening Traffic Management Plan

Traffic Materials Layout Plan



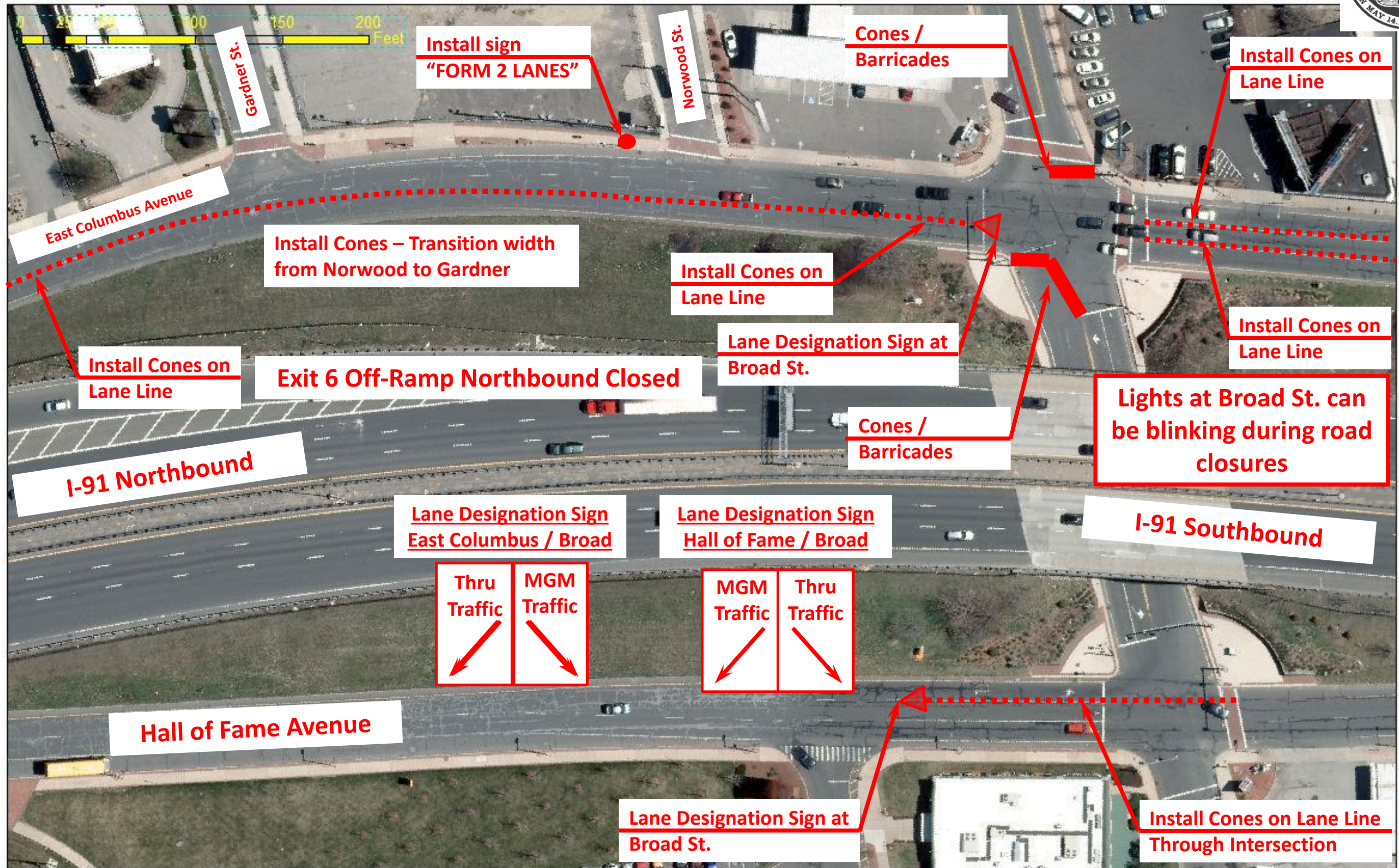
MGM Springfield Grand Opening Traffic Management Plan

Traffic Materials Layout Plan



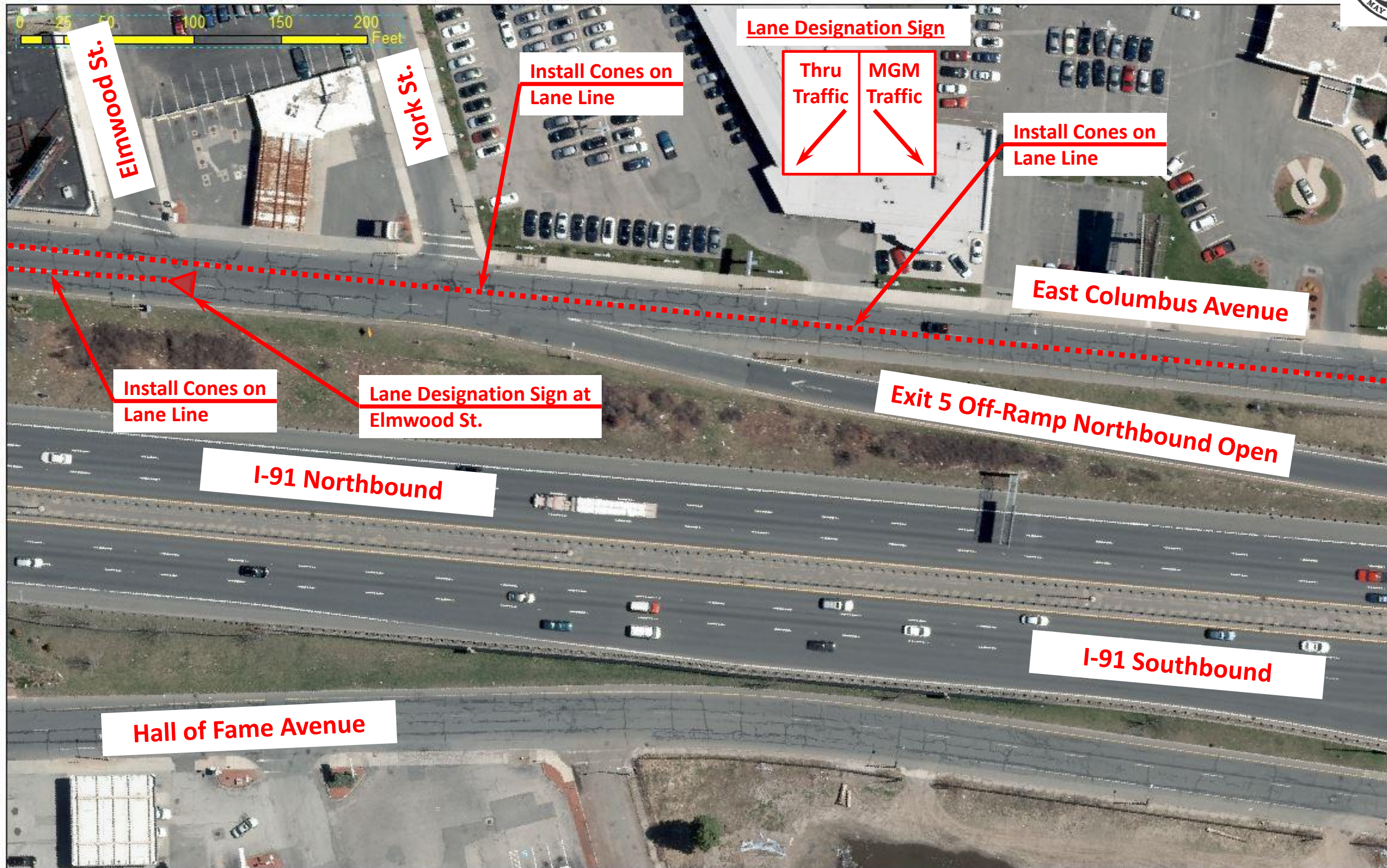
MGM Springfield Grand Opening Traffic Management Plan

Traffic Materials Layout Plan



MGM Springfield Grand Opening Traffic Management Plan

Traffic Materials Layout Plan



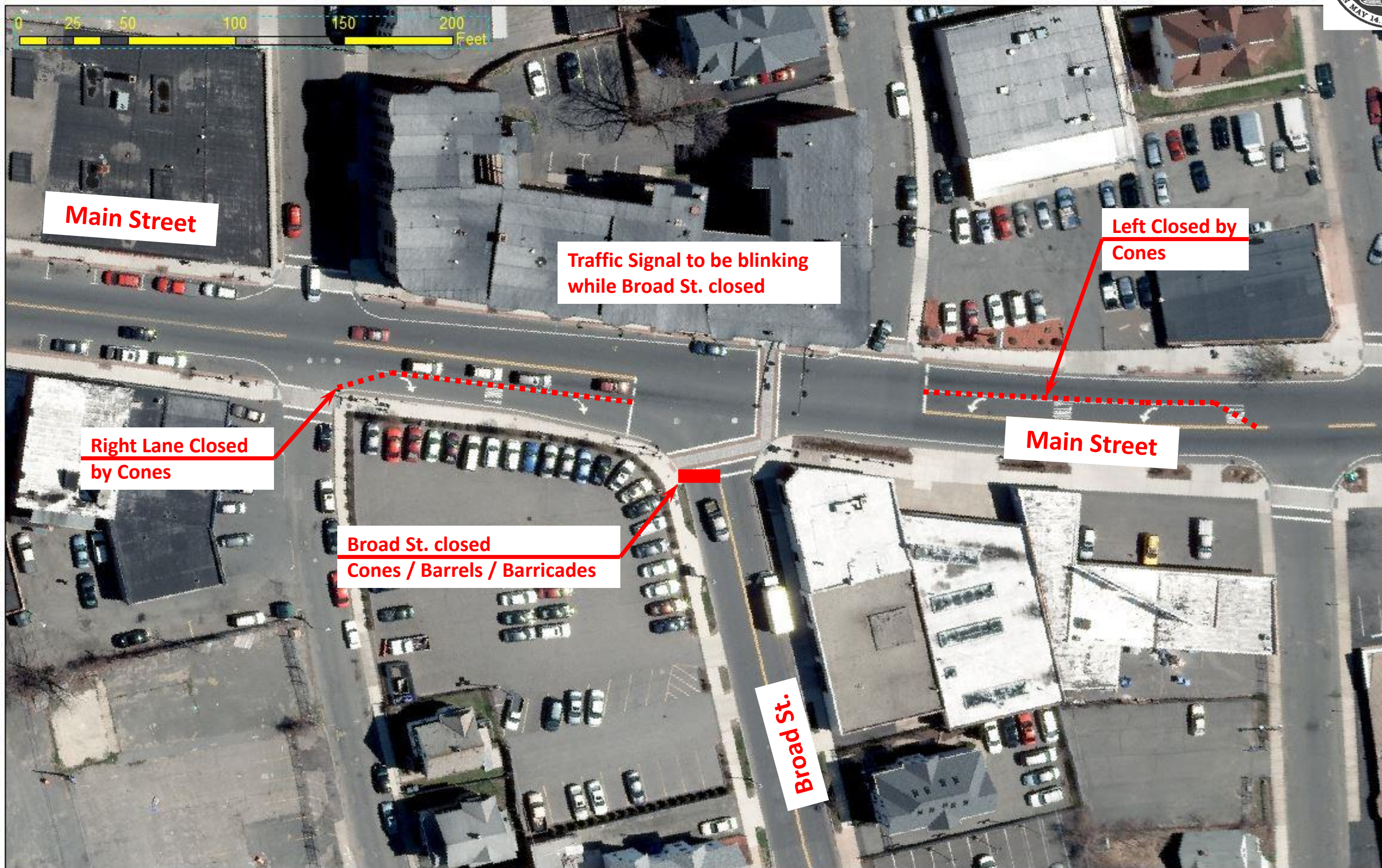
MGM Springfield Grand Opening Traffic Management Plan

Traffic Materials Layout Plan



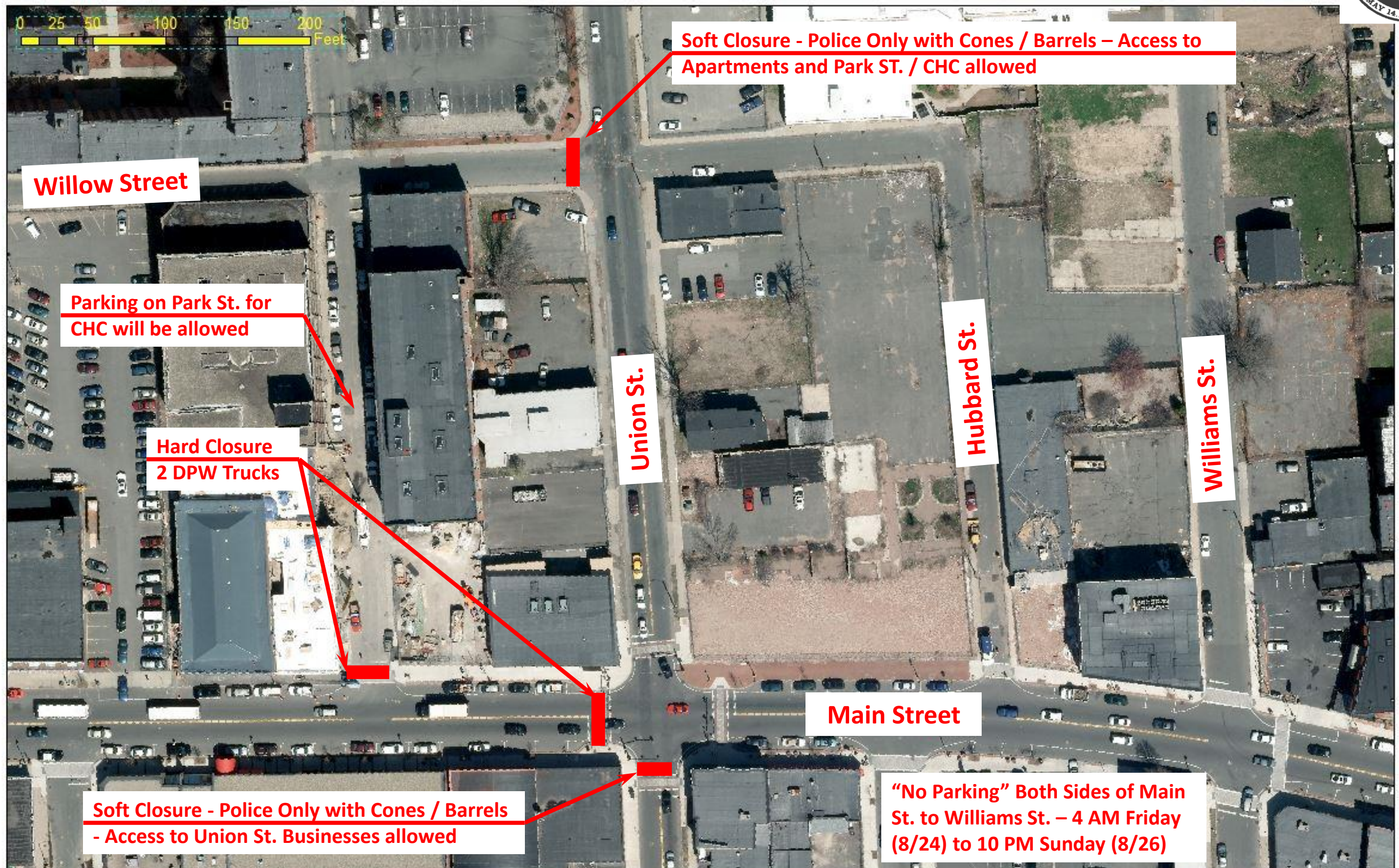
MGM Springfield Grand Opening Traffic Management Plan

Traffic Materials Layout Plan



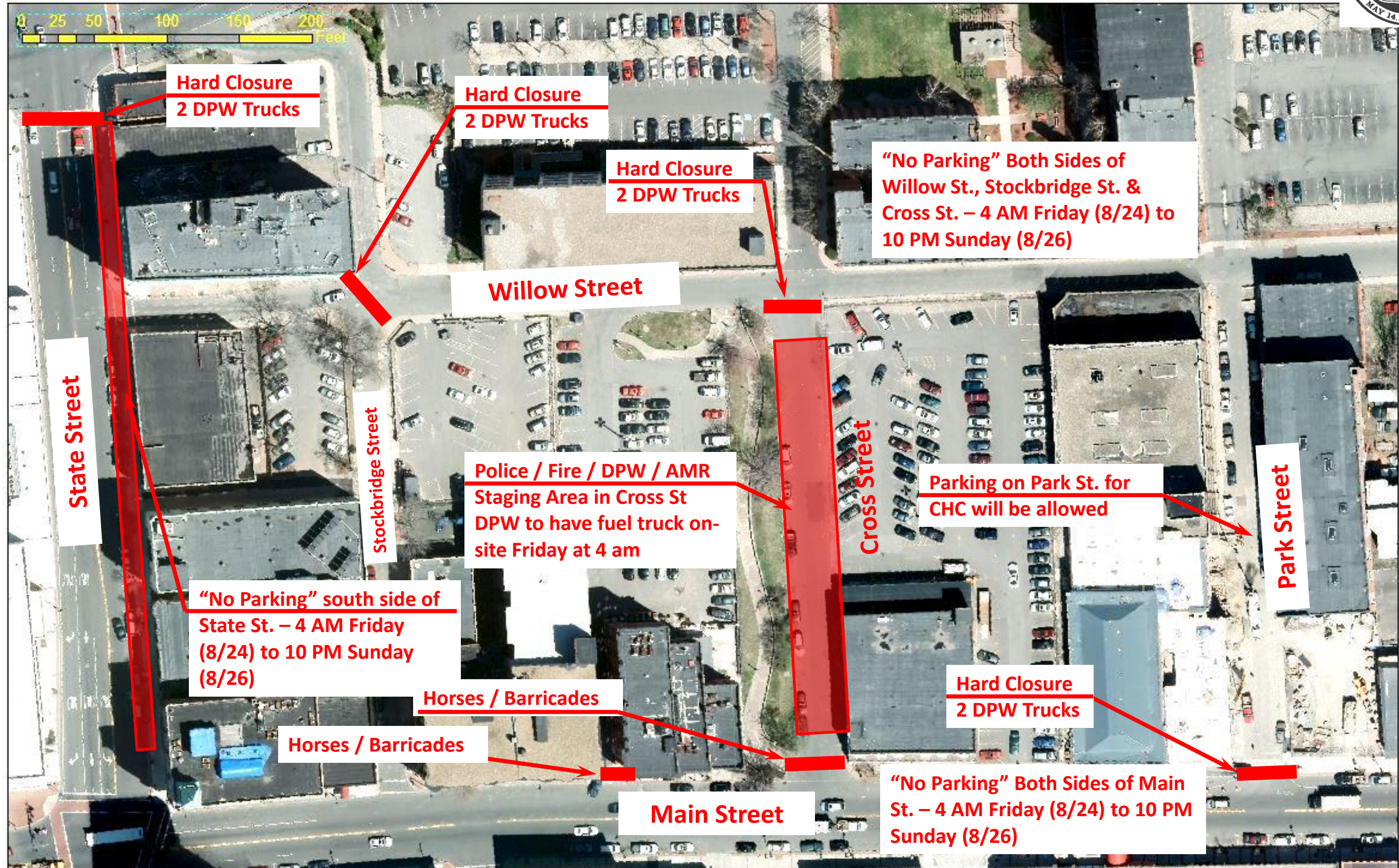
MGM Springfield Grand Opening Traffic Management Plan

Traffic Materials Layout Plan



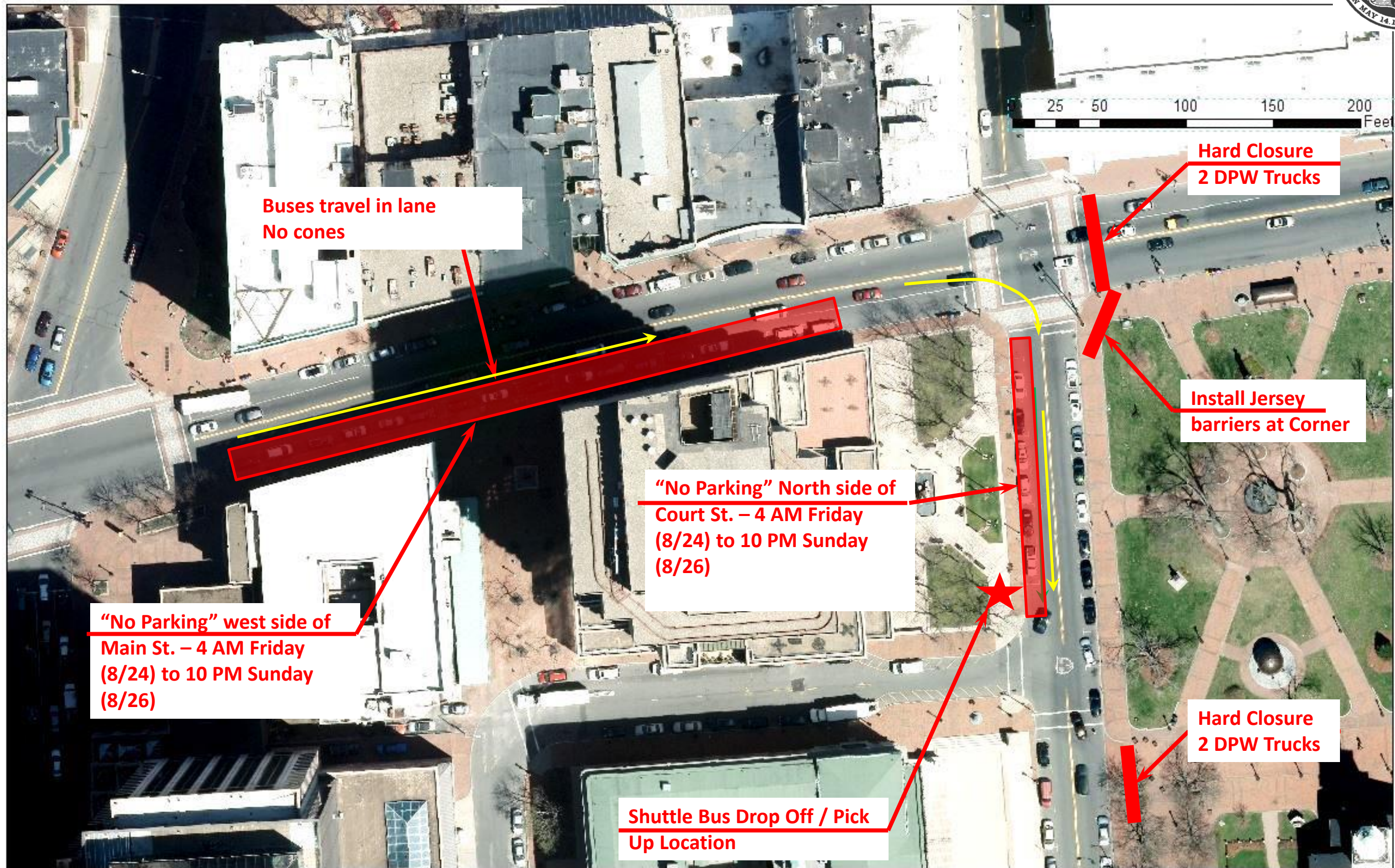
MGM Springfield Grand Opening Traffic Management Plan

Traffic Materials Layout Plan



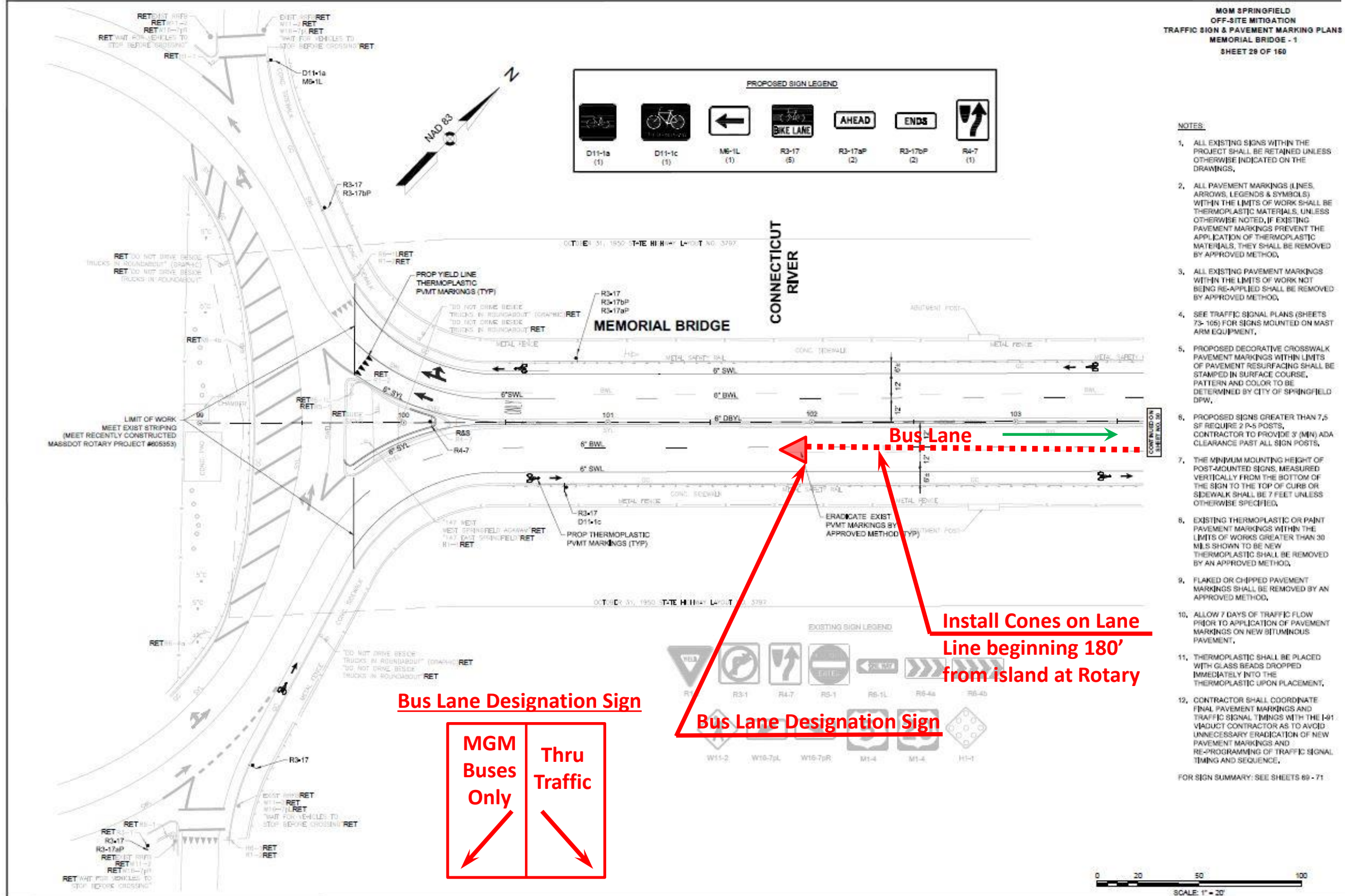
MGM Springfield Grand Opening Traffic Management Plan

Traffic Materials Layout Plan



MGM Springfield Grand Opening Traffic Management Plan

Traffic Materials Layout Plan

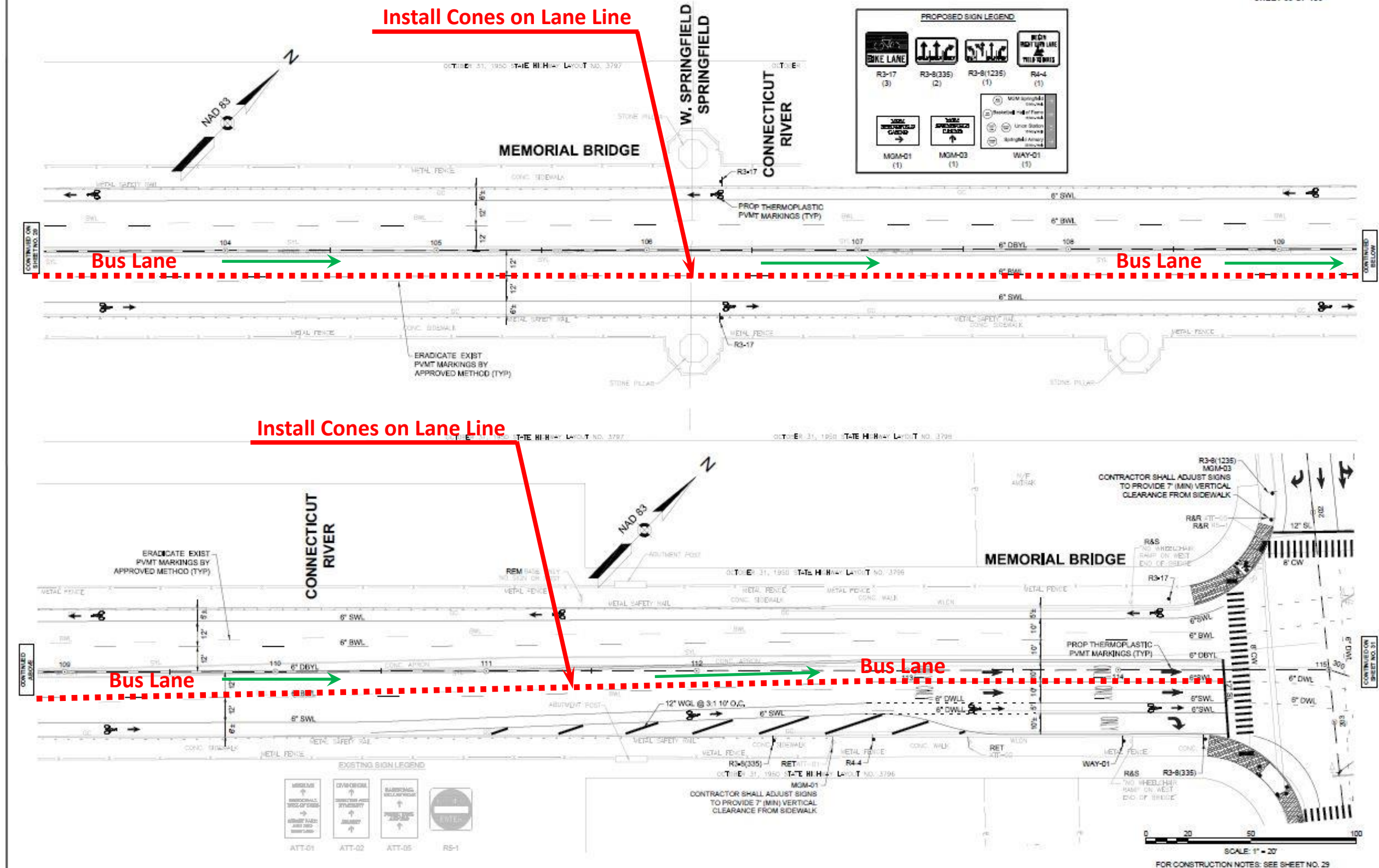


MGM Springfield Grand Opening Traffic Management Plan

Traffic Materials Layout Plan



MGM SPRINGFIELD
OFF-SITE MITIGATION
TRAFFIC SIGN & PAVEMENT MARKING PLANS
MEMORIAL BRIDGE - 2
SHEET 30 OF 150



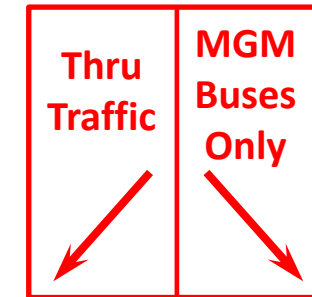
MGM Springfield Grand Opening Traffic Management Plan

Traffic Materials Layout Plan



MGM SPRINGFIELD
OFF-SITE MITIGATION
TRAFFIC SIGN & PAVEMENT MARKING PLANS
WEST COLUMBUS AVENUE - 1
SHEET 31 OF 160

Bus Lane Designation Sign

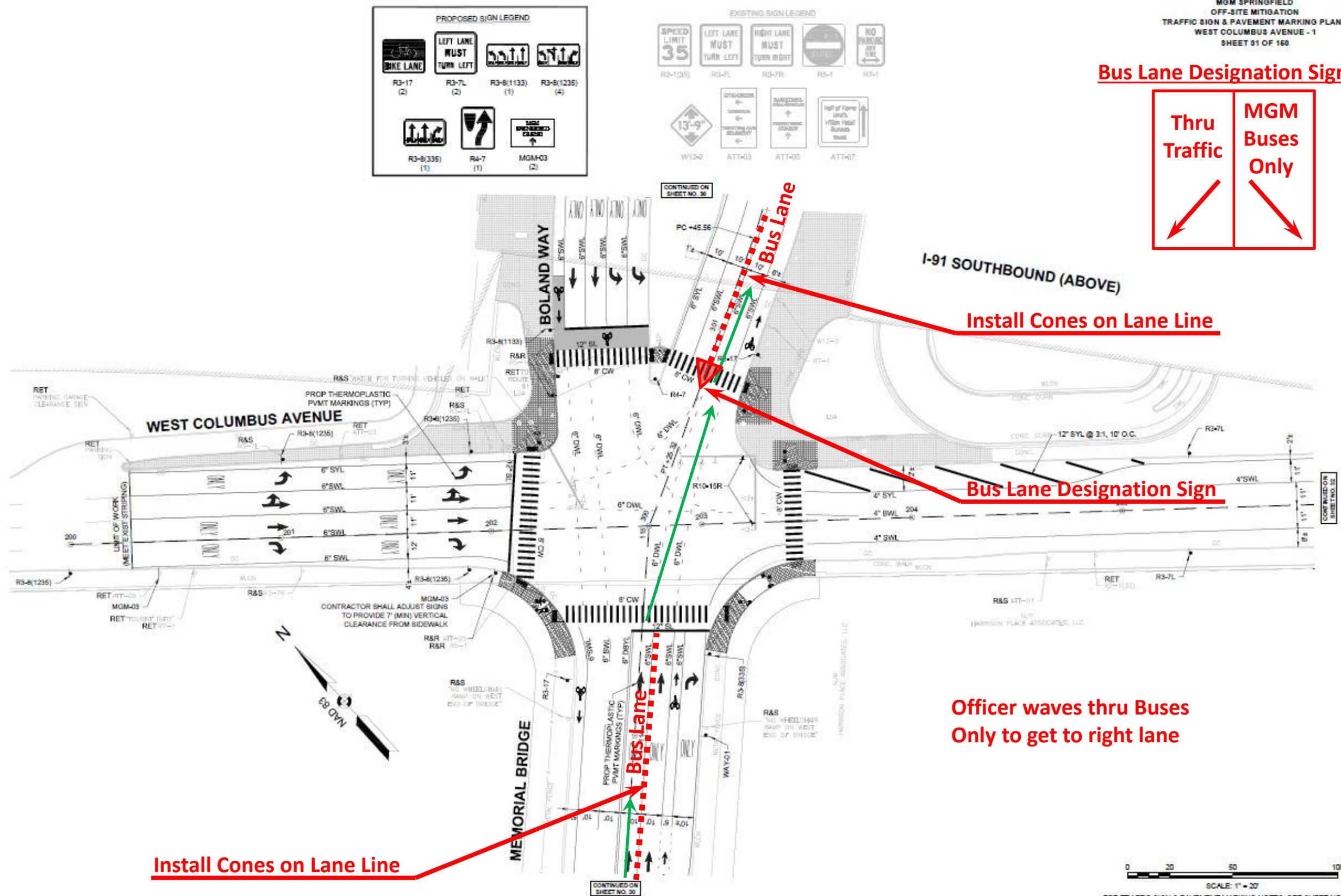


Install Cones on Lane Line

Bus Lane Designation Sign

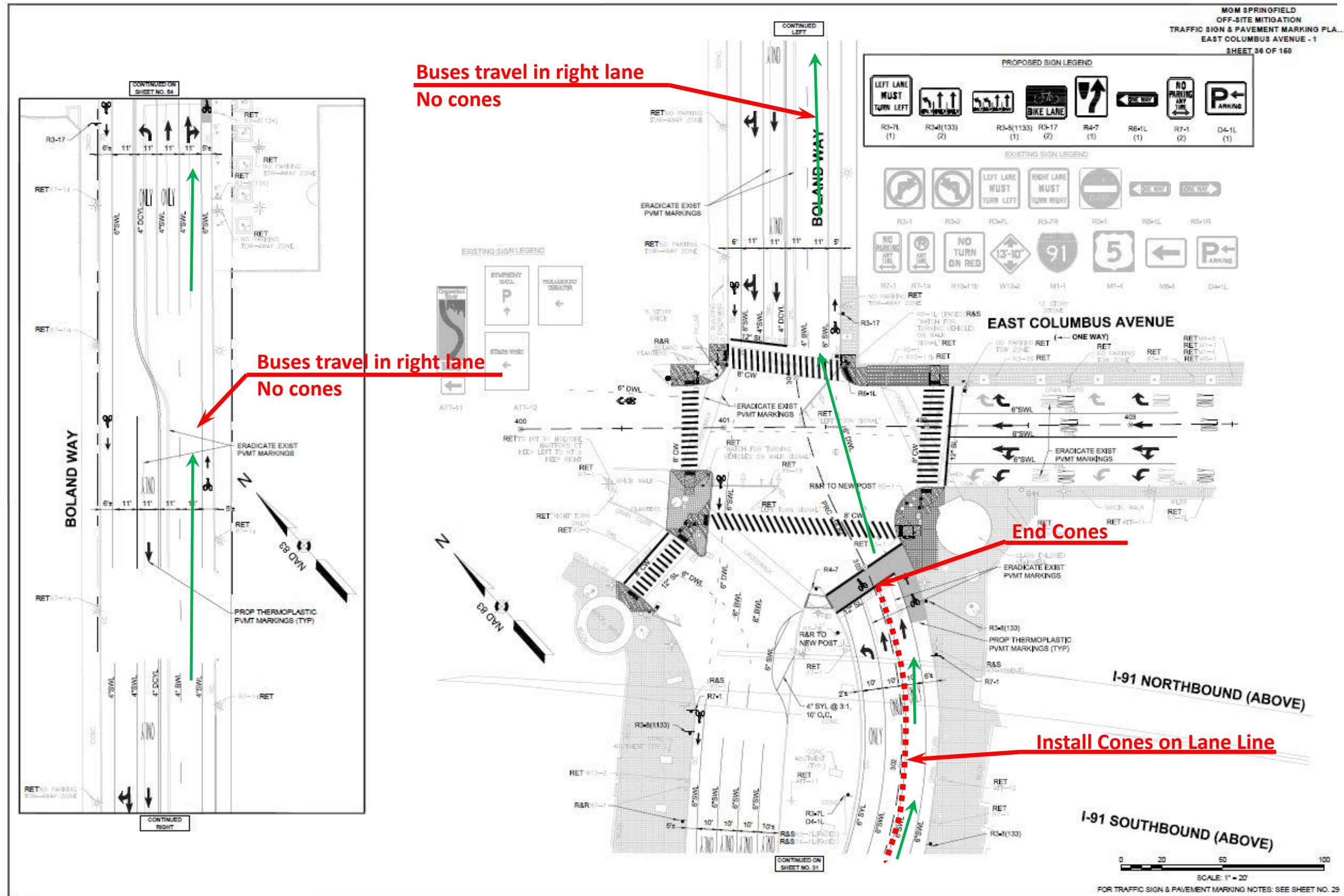
Officer waves thru Buses
Only to get to right lane

Install Cones on Lane Line



MGM Springfield Grand Opening Traffic Management Plan

Traffic Materials Layout Plan

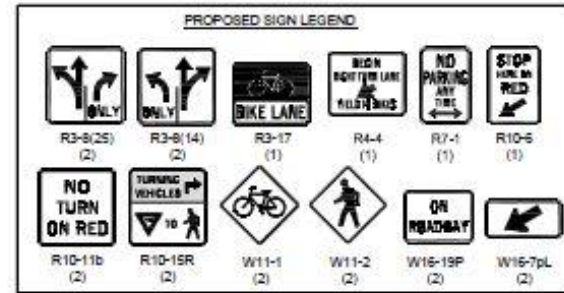


MGM Springfield Grand Opening Traffic Management Plan

Traffic Materials Layout Plan



MGM SPRINGFIELD
OFF-SITE MITIGATION
TRAFFIC SIGN & PAVEMENT MARKING PLAN
MAIN STREET - 3
SHEET 64 OF 160



Buses travel in drive lane
No cones

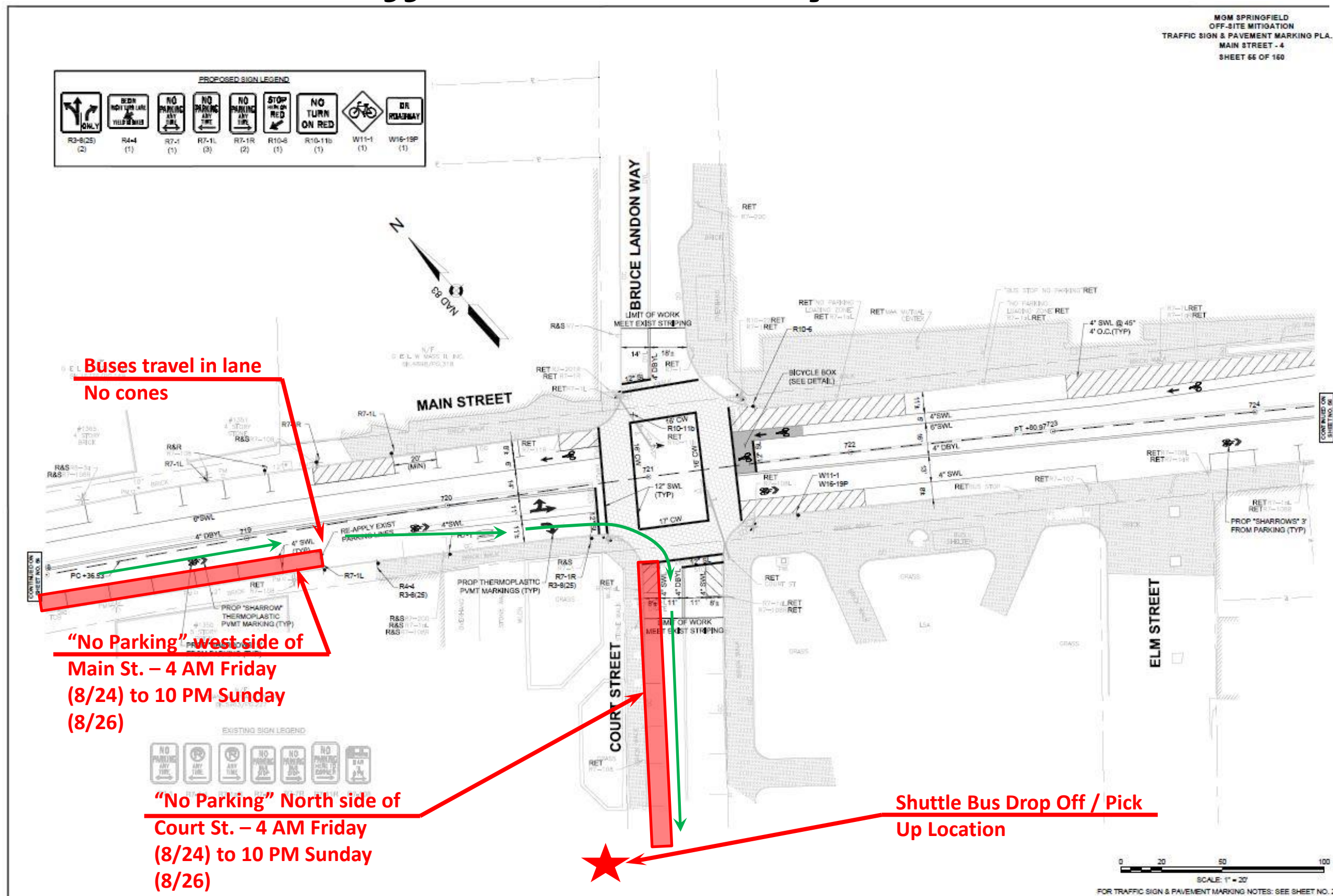
"No Parking" west side of
Main St.

Buses travel in right lane
No cones



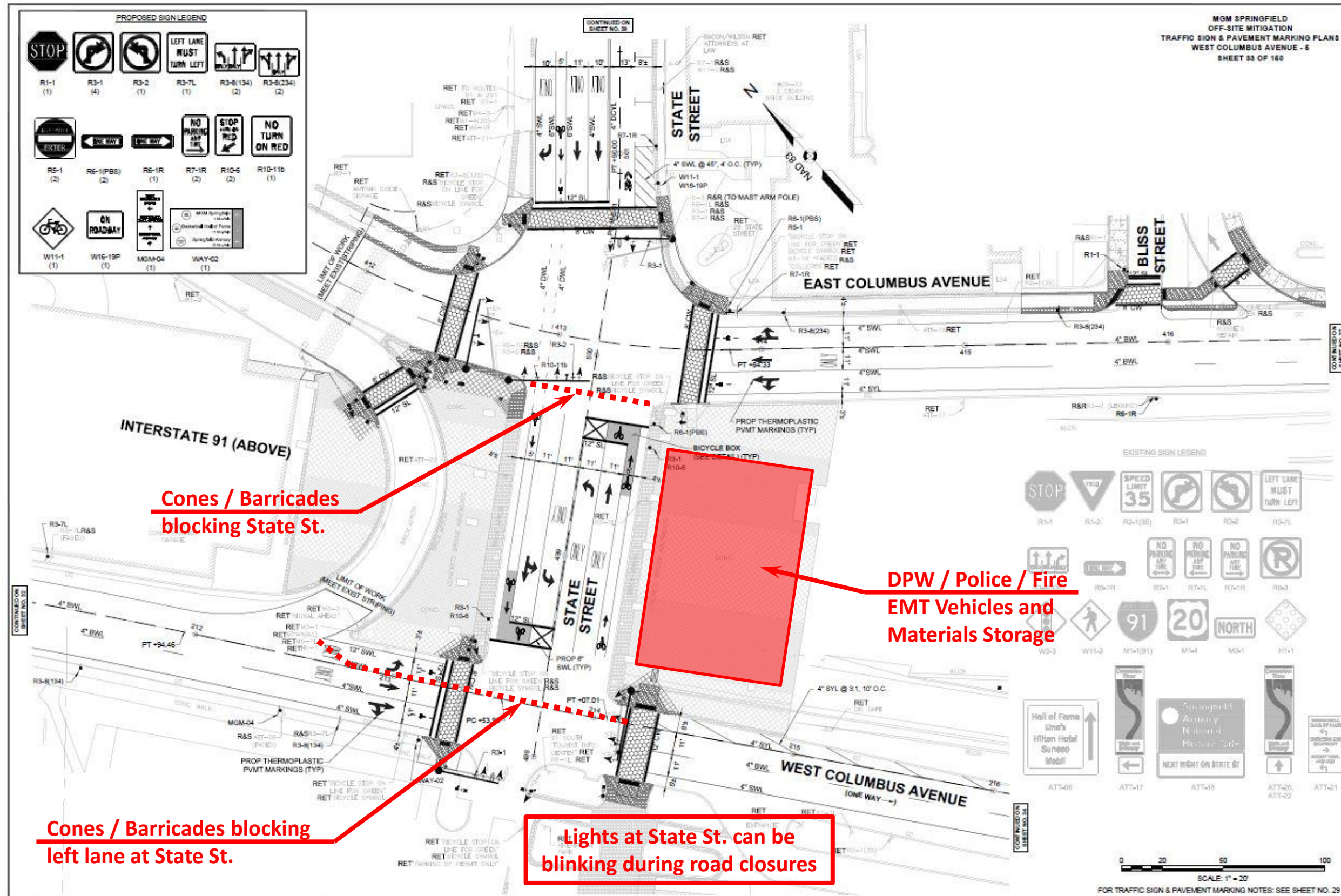
0 20 50 100
SCALE: 1" = 20'

FOR TRAFFIC SIGN & PAVEMENT MARKING NOTES: SEE SHEET NO. 29



MGM Springfield Grand Opening Traffic Management Plan

Traffic Materials Layout Plan



MGM Springfield Grand Opening Traffic Management Plan

Metro Security



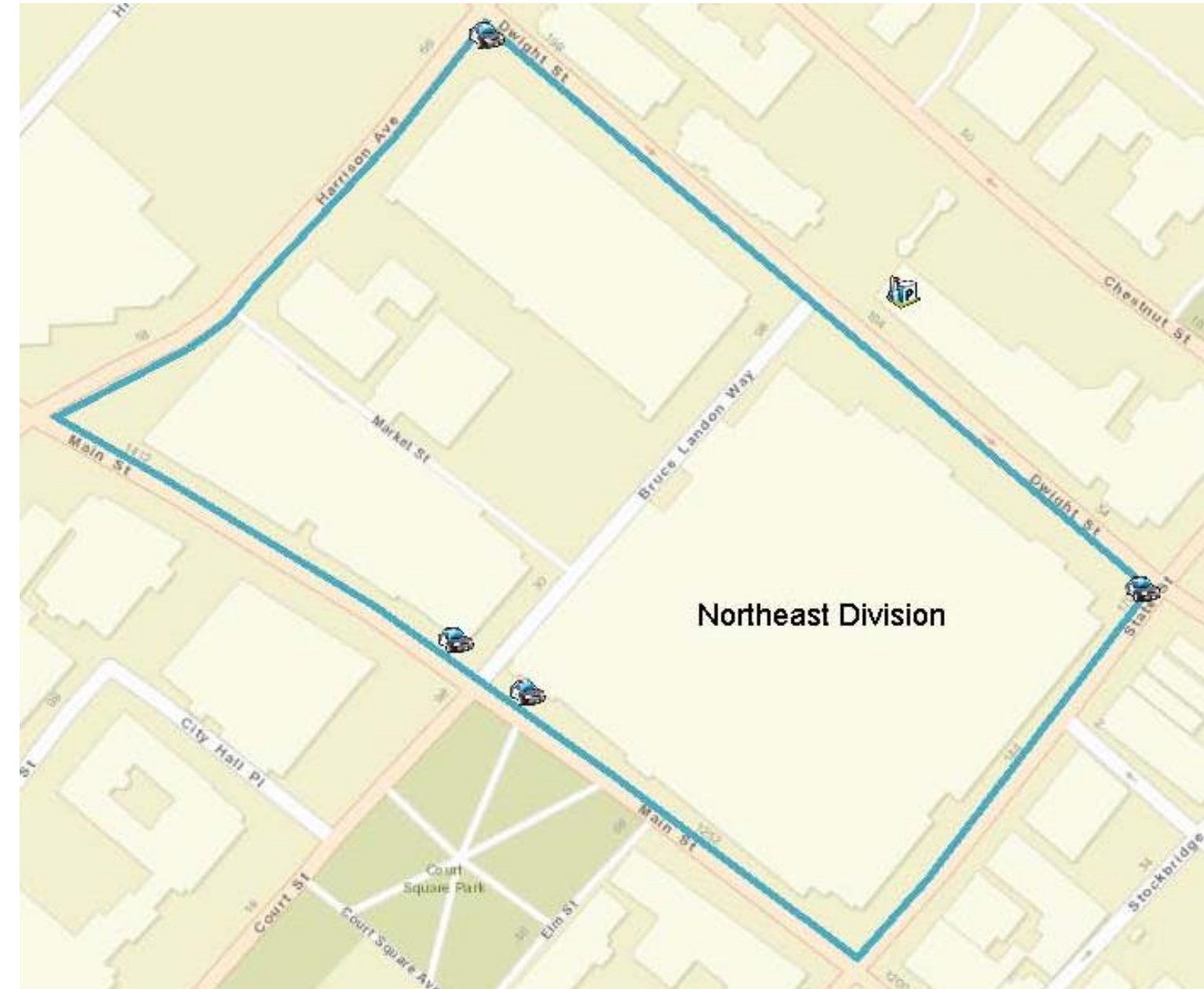
MGM Springfield Grand Opening Traffic Management Plan

Police Sector Maps



MGM Springfield Grand Opening Traffic Management Plan

Police Sector Maps



MGM Springfield Grand Opening Traffic Management Plan

Police Sector Maps

