

springfield, massachusetts



# union station

**Connecting a rich history to a vibrant future**

±64,000 square feet of office space on the upper floors of the historic station





**RICH HISTORY**

Springfield Union Station was built in 1926 and helped define central Springfield. From its construction until after World War II, rail travel thrived in this bustling district, with more than 130 passenger trains passing through daily. The station closed in 1973 and was acquired by the Springfield Redevelopment Authority in 1989. In the two and a half decades since, the area surrounding the station has seen significant reinvestment aimed at reclaiming the distinguished character of Springfield and preserving its heritage.

**VIBRANT FUTURE**

The SRA's \$88.5 million redevelopment of Springfield Union Station, combined with other nearby large-scale projects like the MGM Casino, will serve as the primary catalysts for the area's downtown revitalization. The renovated station will create a multi-modal, mixed-use transportation hub for Amtrak, commuter rail, and regional and intercity bus service and will include:

**±11,000 SF**

of retail space on the concourse level

**±64,000 SF**

of office space on the upper floors of the historic station

**27-BAY**

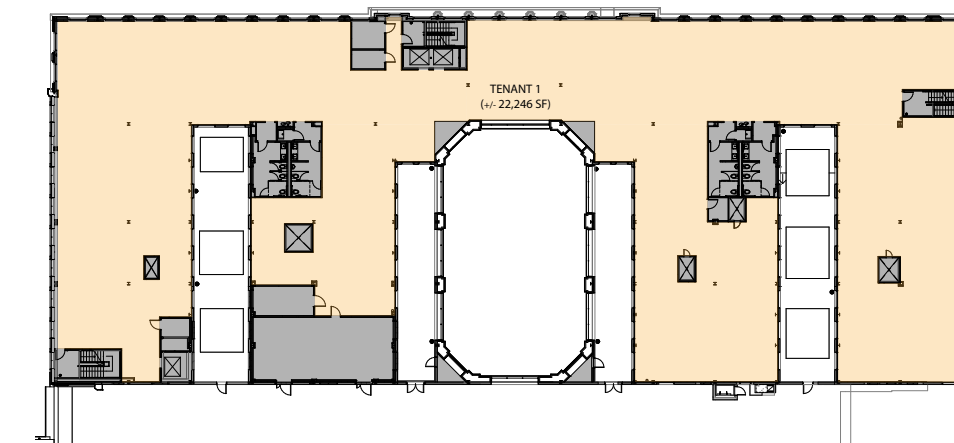
integrated open-air regional and intercity bus terminal

**SIX-LEVEL,  
377-SPACE**

parking garage at the corner of Main Street and Frank B. Murray Street



**TYPICAL OFFICE FLOOR PLAN**



**PREMIER OFFICE ADDRESS**

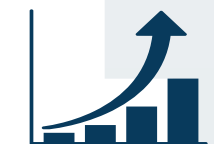
Strategically located at the convergence of the interstate highway system and passenger and freight rail corridors, this unique and vibrant Class A office space will be available for tenant fit out Fall 2016 and offers:



Unparalleled access by train, bus, and car



2 parking spaces/1,000 SF



Modern, efficient floor plates



On-site amenities including cafés, restaurants, and shops



A prime location less than a 1/2 mile from world-renowned museums, entertainment venues, the restaurant district, and numerous parks



**union station**



**MASSACHUSETTS  
REALTY GROUP**

FOR MORE INFORMATION, CONTACT:

**Shawn McMahon**

Shawn.McMahon@am.jll.com

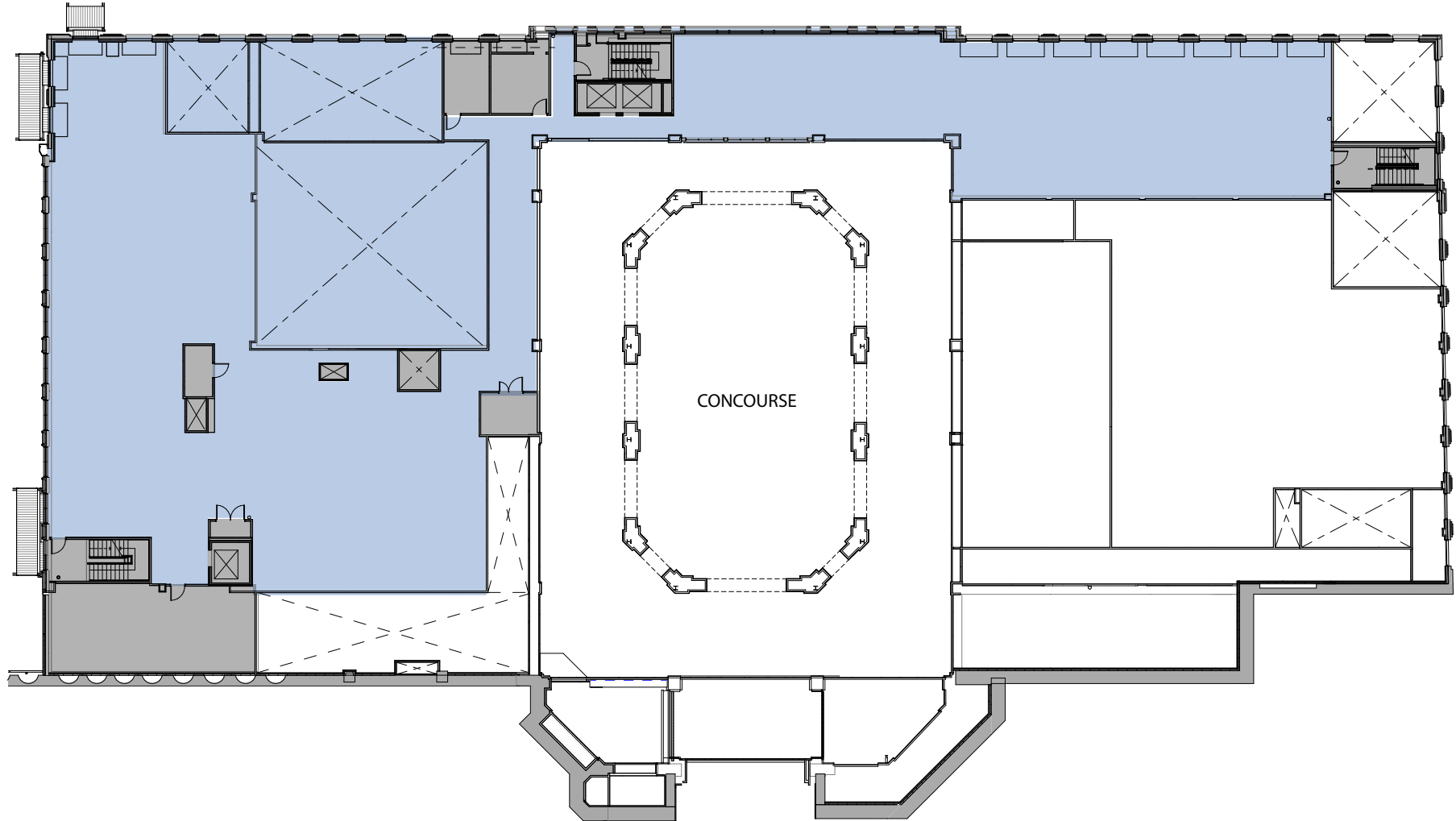
+ 1 413 887 5161

**Emily Crutcher**

Emily.Crutcher@am.jll.com







FOR MORE INFORMATION, CONTACT:

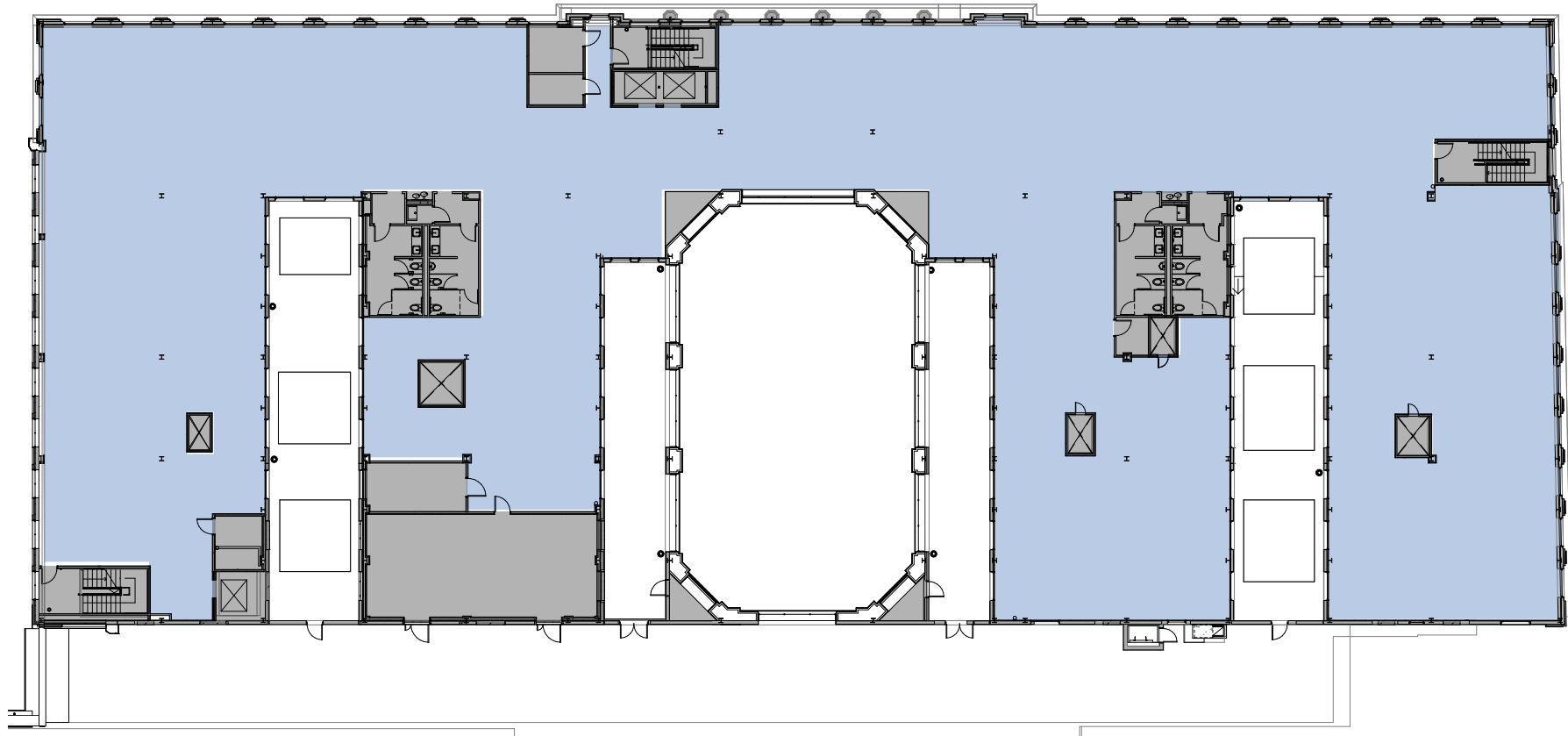


**Shawn McMahon**  
Shawn.McMahon@am.jll.com  
+ 1 413 887 5161

**Emily Crutcher**  
Emily.Crutcher@am.jll.com

**MASSACHUSETTS  
REALTY GROUP**

GREYSTONE



FOR MORE INFORMATION, CONTACT:

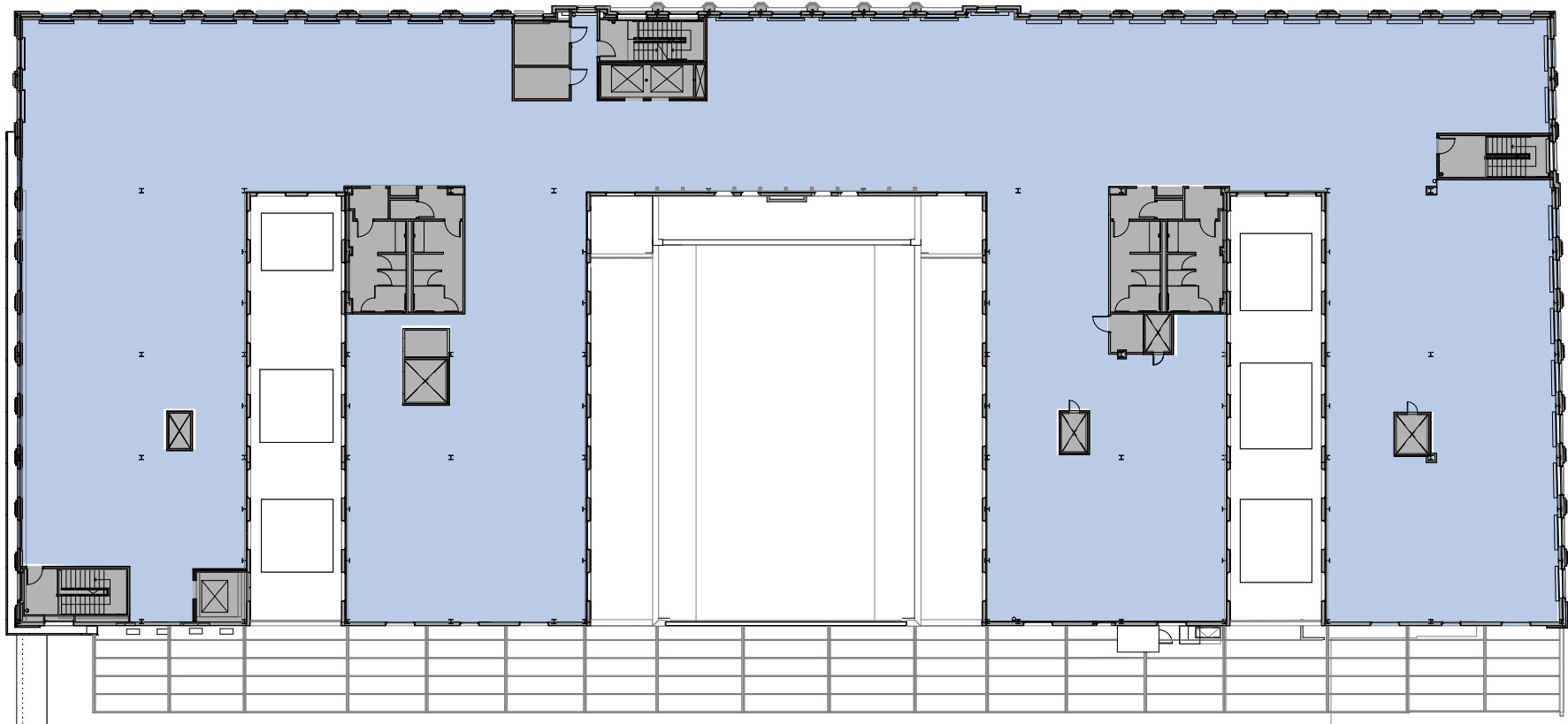


**Shawn McMahon**  
Shawn.McMahon@am.jll.com  
+ 1 413 887 5161

**Emily Crutcher**  
Emily.Crutcher@am.jll.com

**MASSACHUSETTS  
REALTY GROUP**

GREYSTONE



FOR MORE INFORMATION, CONTACT:



**Shawn McMahon**  
Shawn.McMahon@am.jll.com  
+ 1 413 887 5161

**Emily Crutcher**  
Emily.Crutcher@am.jll.com

**MASSACHUSETTS  
REALTY GROUP**

GREYSTONE